



The Replacement of Okeechobee High School

RFQ NO. 21/22-01 | Monday, September 20th
2021



BRAHMAN

1

STAFF ASSIGNED TO THE PROJECT



1937 • CORE FOUNDED

CORE

Founded in 1937.

Integrity. Fairness. Continuous Improvement. Results.

SEP • 60

84
Years

BARBARA HAWKINS

1

STAFF ASSIGNED TO THE PROJECT



1937 CORE FOUNDED

1981 CORE FL ESTABLISHED



SARASOTA

NAPLES

BARAHIMANS

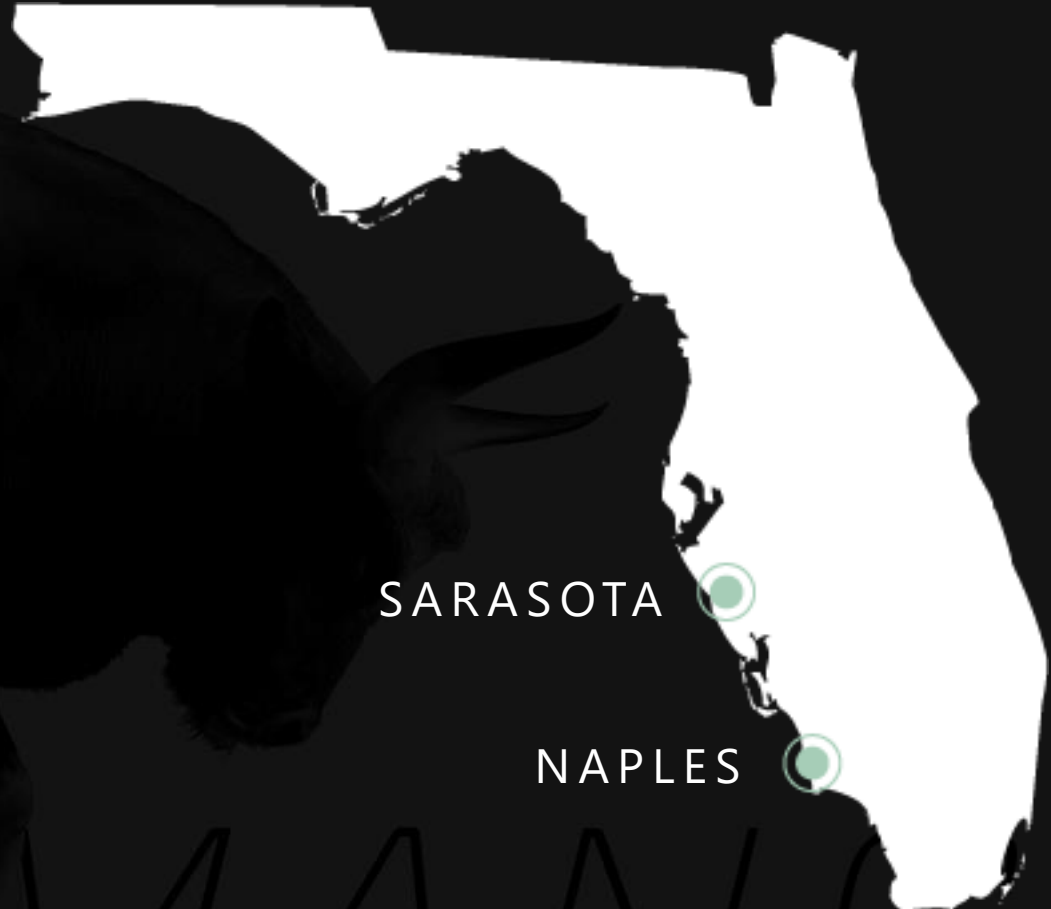
1

STAFF ASSIGNED TO THE PROJECT



1937 CORE FOUNDED

1981 CORE FL ESTABLISHED



SARASOTA

NAPLES

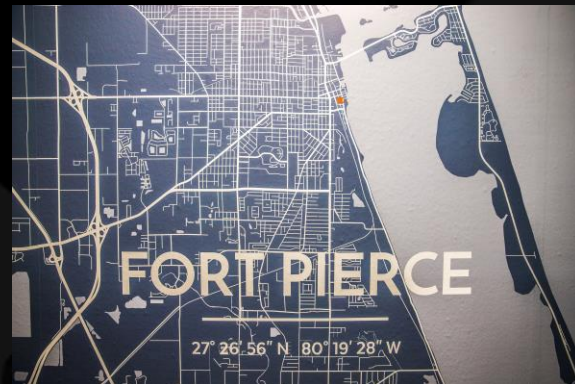
BARAHIMANS

1

STAFF ASSIGNED TO THE PROJECT



- 1937 CORE FOUNDED
- 1981 CORE FL ESTABLISHED
- 2017 REMNANT FOUNDED



1

STAFF ASSIGNED TO THE PROJECT



- 1937 CORE FOUNDED
- 1981 CORE FL ESTABLISHED
- 2017 REMNANT FOUNDED
- 2020 CORE | REMNANT PARTNERSHIP FORMED



BRABRAMANS

K-12 | MUNICIPAL | HIGHER EDUCATION

1

STAFF ASSIGNED TO THE PROJECT



- 1937 CORE FOUNDED
- 1981 CORE FL ESTABLISHED
- 2017 REMNANT FOUNDED
- 2020 CORE | REMNANT PARTNERSHIP FORMED
- 2021 TODAY



BARBARIANS

1

STAFF ASSIGNED TO THE PROJECT



9

Office
Locations In
Florida

137

Employees
Based In
Florida

3

Clients
Served By
Our
Partnership

1

Unified,
Cohesive
Team

1

STAFF ASSIGNED TO THE PROJECT



1

PRECONSTRUCTION



Grant Curtan
Director of
Pre-Construction



Mike
Buckland
Pre-Construction
Manager



Candice
Scotland
Director of Diversity &
Inclusion

2

CONSTRUCTION



Brian Garcia
Sr. Project Manager



Steve Glaser
General
Superintendent



Jack Meredith
Virtual Construction
Manager



Jered Smith
Project Manager



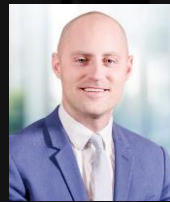
Joe Mayhew
Superintendent



Linda French
Project Accountant/
Administrator

3

EXECUTIVE SUPPORT



Roger Baum
Executive VP



Brad Will
Project Executive



Brandon
Nobile
Project Executive

1

STAFF ASSIGNED TO THE PROJECT



TEAM MEMBER	RELEVANT EXPERIENCE						
NAME/ROLE	K-12	REPLACEMENT SCHOOL	OCCUPIED CAMPUS	PHASED PROJECT	SPECIAL FACILITIES/ALT FUNDING	DAVIS BACON	RELEVANT PROJECT EXAMPLE
GRANT CURTAN, <i>Director of Pre-Construction</i>	✓	✓	✓	✓	✓	✓	Deltona MS Replacement
MIKE BUCKLAND, <i>Pre-Construction Manager</i>	✓	✓	✓	✓	✓	✓	Lincoln Park Academy
CANDICE SCOTLAND, <i>Director of Diversity & Inclusion</i>	✓	✓	✓	✓	✓	✓	Deltona MS Replacement
BRIAN GARCIA, <i>Sr. Project Manager</i>	✓	✓	✓	✓	✓	✓	Lincoln Park Academy
JERED SMITH, <i>Project Manager</i>	✓	✓	✓	✓	✓	✓	Chalmette High School
STEVE GLASER, <i>General Superintendent</i>	✓	✓	✓	✓	✓	✓	Chalmette High School
JOE MAYHEW, <i>Superintendent</i>	✓	✓	✓	✓	✓	✓	Lincoln Park Academy
JACK MEREDITH, <i>Virtual Construction Manager</i>	✓	✓	✓	✓	✓	✓	Deltona MS Replacement
LINDA FRENCH, <i>Project Accountant/Administrator</i>	✓	✓	✓	✓	✓	✓	Lincoln Park Academy
BRAD WILL, <i>Project Executive</i>	✓	✓	✓	✓	✓	✓	Hosford K8 School
BRANDON NOBILE, <i>Project Executive</i>	✓	✓	✓	✓	✓	✓	Lincoln Park Academy
ROGER BAUM, <i>Executive Vice President</i>	✓	✓	✓	✓	✓	✓	Deltona MS Replacement

1

STAFF ASSIGNED TO THE PROJECT



TEAM MEMBER	RELEVANT EXPERIENCE						
NAME/ROLE	K-12	REPLACEMENT SCHOOL	OCCUPIED CAMPUS	PHASED PROJECT	SPECIAL FACILITIES/ALT FUNDING	DAVIS BACON	RELEVANT PROJECT EXAMPLE
GRANT CURTAN, <i>Director of Pre-Construction</i>	✓	✓	✓	✓	✓	✓	Deltona MS Replacement
MIKE BUCKLAND, <i>Pre-Construction Manager</i>	✓	✓	✓	✓	✓	✓	Lincoln Park Academy
CANDICE SCOTLAND, <i>Director of Diversity & Inclusion</i>	✓	✓	✓	✓	✓	✓	Deltona MS Replacement
BRIAN GARCIA, <i>Sr. Project Manager</i>	✓	✓	✓	✓	✓	✓	Lincoln Park Academy
JERED SMITH, <i>Project Manager</i>	✓	✓	✓	✓	✓	✓	Chalmette High School
STEVE GLASER, <i>General Superintendent</i>	✓	✓	✓	✓	✓	✓	Chalmette High School
JOE MAYHEW, <i>Superintendent</i>	✓	✓	✓	✓	✓	✓	Lincoln Park Academy
JACK MEREDITH, <i>Virtual Construction Manager</i>	✓	✓	✓	✓	✓	✓	Deltona MS Replacement
LINDA FRENCH, <i>Project Accountant/Administrator</i>	✓	✓	✓	✓	✓	✓	Lincoln Park Academy
BRAD WILL, <i>Project Executive</i>	✓	✓	✓	✓	✓	✓	Hosford K8 School
BRANDON NOBILE, <i>Project Executive</i>	✓	✓	✓	✓	✓	✓	Lincoln Park Academy
ROGER BAUM, <i>Executive Vice President</i>	✓	✓	✓	✓	✓	✓	Deltona MS Replacement

1

STAFF ASSIGNED TO THE PROJECT



TEAM MEMBER	RELEVANT EXPERIENCE						
NAME/ROLE	K-12	REPLACEMENT SCHOOL	OCCUPIED CAMPUS	PHASED PROJECT	SPECIAL FACILITIES/ALT FUNDING	DAVIS BACON	RELEVANT PROJECT EXAMPLE
GRANT CURTAN, <i>Director of Pre-Construction</i>	✓	✓	✓	✓	✓	✓	Deltona MS Replacement
MIKE BUCKLAND, <i>Pre-Construction Manager</i>	✓	✓	✓	✓	✓	✓	Lincoln Park Academy
CANDICE SCOTLAND, <i>Director of Diversity & Inclusion</i>	✓	✓	✓	✓	✓	✓	Deltona MS Replacement
BRIAN GARCIA, <i>Sr. Project Manager</i>	✓	✓	✓	✓	✓	✓	Lincoln Park Academy
JERED SMITH, <i>Project Manager</i>	✓	✓	✓	✓	✓	✓	Chalmette High School
STEVE GLASER, <i>General Superintendent</i>	✓	✓	✓	✓	✓	✓	Chalmette High School
JOE MAYHEW, <i>Superintendent</i>	✓	✓	✓	✓	✓	✓	Lincoln Park Academy
JACK MEREDITH, <i>Virtual Construction Manager</i>	✓	✓	✓	✓	✓	✓	Deltona MS Replacement
LINDA FRENCH, <i>Project Accountant/Administrator</i>	✓	✓	✓	✓	✓	✓	Lincoln Park Academy
BRAD WILL, <i>Project Executive</i>	✓	✓	✓	✓	✓	✓	Hosford K8 School
BRANDON NOBILE, <i>Project Executive</i>	✓	✓	✓	✓	✓	✓	Lincoln Park Academy
ROGER BAUM, <i>Executive Vice President</i>	✓	✓	✓	✓	✓	✓	Deltona MS Replacement

1

STAFF ASSIGNED TO THE PROJECT



TEAM MEMBER	RELEVANT EXPERIENCE						
NAME/ROLE	K-12	REPLACEMENT SCHOOL	OCCUPIED CAMPUS	PHASED PROJECT	SPECIAL FACILITIES/ALT FUNDING	DAVIS BACON	RELEVANT PROJECT EXAMPLE
GRANT CURTAN, <i>Director of Pre-Construction</i>	✓	✓	✓	✓	✓	✓	Deltona MS Replacement
MIKE BUCKLAND, <i>Pre-Construction Manager</i>	✓	✓	✓	✓	✓	✓	Lincoln Park Academy
CANDICE SCOTLAND, <i>Director of Diversity & Inclusion</i>	✓	✓	✓	✓	✓	✓	Deltona MS Replacement
BRIAN GARCIA, <i>Sr. Project Manager</i>	✓	✓	✓	✓	✓	✓	Lincoln Park Academy
JERED SMITH, <i>Project Manager</i>	✓	✓	✓	✓	✓	✓	Chalmette High School
STEVE GLASER, <i>General Superintendent</i>	✓	✓	✓	✓	✓	✓	Chalmette High School
JOE MAYHEW, <i>Superintendent</i>	✓	✓	✓	✓	✓	✓	Lincoln Park Academy
JACK MEREDITH, <i>Virtual Construction Manager</i>	✓	✓	✓	✓	✓	✓	Deltona MS Replacement
LINDA FRENCH, <i>Project Accountant/Administrator</i>	✓	✓	✓	✓	✓	✓	Lincoln Park Academy
BRAD WILL, <i>Project Executive</i>	✓	✓	✓	✓	✓	✓	Hosford K8 School
BRANDON NOBILE, <i>Project Executive</i>	✓	✓	✓	✓	✓	✓	Lincoln Park Academy
ROGER BAUM, <i>Executive Vice President</i>	✓	✓	✓	✓	✓	✓	Deltona MS Replacement

1

STAFF ASSIGNED TO THE PROJECT



TEAM MEMBER	RELEVANT EXPERIENCE						
NAME/ROLE	K-12	REPLACEMENT SCHOOL	OCCUPIED CAMPUS	PHASED PROJECT	SPECIAL FACILITIES/ALT FUNDING	DAVIS BACON	RELEVANT PROJECT EXAMPLE
GRANT CURTAN, <i>Director of Pre-Construction</i>	✓	✓	✓	✓	✓	✓	Deltona MS Replacement
MIKE BUCKLAND, <i>Pre-Construction Manager</i>	✓	✓	✓	✓	✓	✓	Lincoln Park Academy
CANDICE SCOTLAND, <i>Director of Diversity & Inclusion</i>	✓	✓	✓	✓	✓	✓	Deltona MS Replacement
BRIAN GARCIA, <i>Sr. Project Manager</i>	✓	✓	✓	✓	✓	✓	Lincoln Park Academy
JERED SMITH, <i>Project Manager</i>	✓	✓	✓	✓	✓	✓	Chalmette High School
STEVE GLASER, <i>General Superintendent</i>	✓	✓	✓	✓	✓	✓	Chalmette High School
JOE MAYHEW, <i>Superintendent</i>	✓	✓	✓	✓	✓	✓	Lincoln Park Academy
JACK MEREDITH, <i>Virtual Construction Manager</i>	✓	✓	✓	✓	✓	✓	Deltona MS Replacement
LINDA FRENCH, <i>Project Accountant/Administrator</i>	✓	✓	✓	✓	✓	✓	Lincoln Park Academy
BRAD WILL, <i>Project Executive</i>	✓	✓	✓	✓	✓	✓	Hosford K8 School
BRANDON NOBILE, <i>Project Executive</i>	✓	✓	✓	✓	✓	✓	Lincoln Park Academy
ROGER BAUM, <i>Executive Vice President</i>	✓	✓	✓	✓	✓	✓	Deltona MS Replacement

1

STAFF ASSIGNED TO THE PROJECT



Yearling Middle School Remodel Ph	of Entry - \$41,517.09	Yearling Middle School Door Replacement
Exterior Envelope, Board Room Expansion	Osceola Middle School Single Point of	- \$47,330.17
& Main Entrance Ceiling Replacement	Entry - \$33,743.01	Everglades Elementary School Pole Barn
\$-	Central Elementary School Door	and Fencing - \$19,862.07
KW Office Downstairs - \$12,358.91	Replacement - \$26,378.74	South ES Bus Parking Area - \$277,595.58
North Elementary School Counselor Office	Everglades Elementary Door Replacement -	South Elementary School Media Center
Space - \$26,313.99	\$34,437.19	Interior Renovation - \$20,819.49
Seminole Elementary Security Gates -	Maintenance Building Door Replacement -	Okeechobee Boardroom Expansion -
\$45,803.19	\$24,671.66	\$76,430.95
Everglades Elementary Security Gates -	North Elementary School Door Replacement	Okeechobee School Admin Building
\$51,460.11	- \$14,635.08	Envelope - \$1,284,309.88
Yearling Middle School Single Point of	Okeechobee Freshman Campus Door	Admin Building Lobby 2nd Floor/Ceiling
Entry - \$22,830.69	Replacement - \$58,287.38	Joists & Beam Repairs - \$79,118.84
Seminole Elementary School Single Point	Osceola Middle School Door Replacement -	North Elementary School Roofing -
of Entry - \$12,960.08	\$168,178.42	\$607,493.39
Everglades Elementary School Single	Seminole Elementary School Door	Yearling Middle School Remodel -
Point of Entry - \$12,251.58	Replacement - \$21,601.70	\$283,270.00
Okeechobee Freshman Campus Single Point	South Elementary School Door Replacement	
	- \$21,606.96	



DEEP BENCH OF
LOCAL
RELATIONSHIPS



ACTIVE
OUTREACH &
RECRUITMENT



INVESTING IN
PEOPLE

2

LOCAL PARTICIPATION



DEEP BENCH OF LOCAL
RELATIONSHIPS

487

PRE-QUALIFIED
LOCAL TRADE
PARTNERS

BARAHMAN'S



— ZOOM INVITE | Steel Big Package

JOIN THE CORE | HORUS TEAM FOR THE

Water Springs Middle School Steel Bid Package

SEPTEMBER 30

3:30 PM / ZOOM MEETING

The project consists of the reuse of a multi-story, prototype middle school on a new 33.9 acre site. The new relief school known as Site 65-M-W-4, is located in the Town Center West - Horizon West Town Center, west of County Road 545, Avalon Road.

PROJECT COST & SIZE
\$36M | 185,000 SF | 1,348 Student Stations

PROJECT COMPLETION
May 2023

RSVP
Angela.Williams@horus-cs.com



— Water Springs Middle School | Steel Big Package

VIRTUAL SCHOOL UU COMMUNITY TOWN HALL

MEETING INFORMATION
March 25, 2021 at 5:00 PM (EST)
Please register through the QR code.

PROJECT INFORMATION
The School UU project will be the new construction of a K-8 school encompassing five buildings completed by CORE|HORUS. Each building will be connected with elevated walkways and vary from one to three stories. This project will also include a new parking lot, playground, and track and field area.

PROJECT LOCATION
6131 Covington Drive, Apollo Beach, FL 33572

PROJECT COMPLETION
Summer of 2022

QUESTIONS
If you have any questions please contact:
Kathryn Harrigan, Project Coordinator, CORE
fzoom@coreconstruction.com



JOIN THE CORE | HORUS TEAM FOR THE

Water Springs Middle School

Subcontractor Virtual M/WBE Outreach Workshop

WHEN & WHERE
9/22 Wednesday | 4:30PM to 5:30PM via Zoom

PROJECT INFORMATION
The project consists of the reuse of a multi-story, prototype middle school on a new 33.9 acre site. The new relief school, known as Site 65-M-W-4, is located in the Town Center West - Horizon West Town Center, west of County Road 545, Avalon Road.

PROJECT COST & SIZE
\$36M | 185,000 SF | 1,348 Student Stations

PROJECT COMPLETION
May 2023

SCAN ME



SCAN THE QR CODE TO REGISTER
email: Angela.Williams@horus-cs.com
with questions



CASE STUDY: GRASSLAND ELECTRICAL



Owner: Fabian F. Cook, Jr.

Website: www.grasslandenterprisesinc.com

Background: Established in 2007, Grassland Electrical is a Minority Business Enterprise (M.B.E.) certified electrical company. Prior to entering Horus Academy, Grassland had an average contract value of \$75K.

Growth Chart		
	Contract Value	Year
Average contract prior to Horus Academy	\$75,000.00	2016
First contract with CORE HORUS	\$792,000.00	2017
Second contract with CORE HORUS	\$1,700,000.00	2018
Third contract with CORE HORUS	\$7,700,000.00	2019



CASE STUDY: ENVISION



Owners: Allen Greene, Sr. and Allen Greene II

Website: www.envision-cs.com

Background: Envision is 100% minority owned and MBE/DBE certified contractor. Prior to entering Horus Academy, Envision had an annual revenue of \$250K.

Growth Chart		
	Annual Revenue	Year
Annual revenue prior to Horus Academy	\$250,000.00	2013
Annual revenue after 2 years with CORE HORUS	\$1,700,000.00	2015
Annual revenue after 6 years with CORE HORUS	\$8,600,000.00	2019



GOALS ARE MEANT TO BE BROKEN

CORE | HORUS is not only committed to achieving project participation goals, but frankly strives to exceed them on each and every project that the team undertakes. Here is a small sampling of some recent achievements:

M/WBE Participation				
Project	% Goal	Contract Value	M/WBE Amt.	% Achieved
Lake George Elementary School	23%	\$8,900,000	\$2,491,110	27.99%
Sumner High School	25%	\$68,000,000	\$20,145,935	29.63%
Charles W. Flanagan High School	35%	\$10,059,052	\$3,724,969	37.03%
Piper High School	35%	\$696,562	\$257,456	36.96%
Rickards Middle School	35%	\$281,457	\$100,958	36%
Orange County Convention Center	10%	\$30,550,000	\$7,800,000	25.53%
Sunrise Elementary School	23%	\$8,900,000	\$2,925,430	32.87%
Hidden Oaks Elementary School	23%	\$14,608,038	\$3,519,476	28%
Washington Shores Elementary School	23%	\$2,900,359	\$759,197	26.1%
Booker T. Washington High School	35%	\$55,164,066	\$21,513,986	39%
McDonogh #42 Elementary School	25%	\$15,960,402	\$4,842,386	30.34%
Dr. Martin Luther King Jr. High School	25%	\$35,877,226	\$11,225,984	31.29%
Lusher High School	25%	\$15,232,828	\$5,713,834	37.51%

“The mentoring and direction that CORE | HORUS has given me is invaluable. My exponential growth could not have been possible without HORUS Academy and the one-on-one coaching and advocacy I received. This opportunity has truly been a learning process and given me the opportunity to increase capacity and help me understand how to truly scale my business.”

Fabian F. Cook Jr., President, Grassland Electrical



TAB 3

MAN OWNED

will actually

level

Page 7

3 EXPERIENCE WORKING ON AN OCCUPIED SCHOOL CAMPUS



FIRM EXPERIENCE

TEAM EXPERIENCE

LESSONS LEARNED

BRABRAMANS

3 EXPERIENCE WORKING ON AN OCCUPIED SCHOOL CAMPUS



2,803

OCCUPIED CAMPUS
PROJECTS
COMPLETED

2,107

OF WHICH WERE K-
12
PROJECTS

TEAM EXPERIENCE

LESSONS LEARNED

3 EXPERIENCE WORKING ON AN OCCUPIED SCHOOL CAMPUS



2,803

OCCUPIED CAMPUS
PROJECTS
COMPLETED

2,107

OF WHICH WERE K-
12
PROJECTS

473

TOTAL COMBINED NUMBER OF OCCUPIED CAMPUS
PROJECTS COMPLETED BY THIS PROPOSING
PROJECT TEAM

LESSONS LEARNED

BRAMMANS

3 EXPERIENCE WORKING ON AN OCCUPIED SCHOOL CAMPUS



2,803

OCCUPIED CAMPUS
PROJECTS
COMPLETED

2,107

OF WHICH WERE K-
12
PROJECTS

473

TOTAL COMBINED NUMBER OF OCCUPIED CAMPUS
PROJECTS COMPLETED BY THIS PROPOSING
PROJECT TEAM

IT'S ALL ABOUT THE STUDENT EXPERIENCE

BARABRAMANS



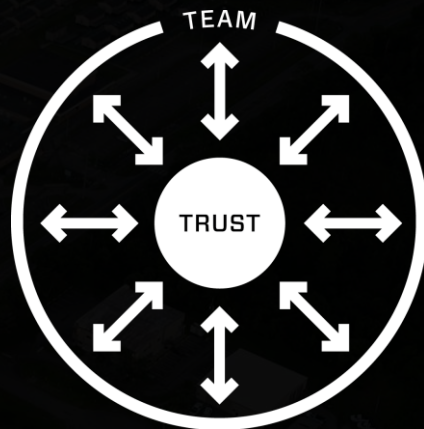
SEPARATING CONSTRUCTION ACTIVITIES FROM LEARNING AREAS

OFF-HOURS CONSTRUCTION



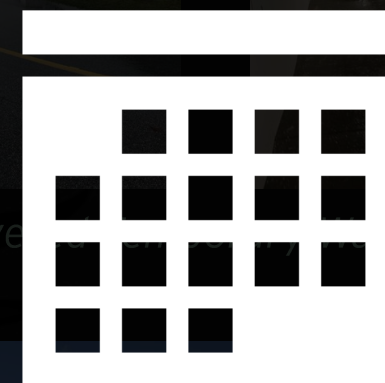
- Nights
- Weekends
- Holiday Breaks

2x WEEKLY STAKEHOLDER COORDINATION



- School Administration
- District Officials
- Architect/Engineers
- Subcontractors

SCHOOL ACTIVITY COORDINATION



- Community Hub With Many Events
- School Events Planned & Prepared For
- Clean, Safe, and Secure
- Built Into Our 3 Week Look-ahead Schedule

DELTONA, FL | SEPTEMBER 2021

3 EXPERIENCE WORKING ON AN OCCUPIED SCHOOL CAMPUS



TEAM MEMBER	RELEVANT EXPERIENCE						
NAME/ROLE	K-12	REPLACEMENT SCHOOL	OCCUPIED CAMPUS	PHASED PROJECT	SPECIAL FACILITIES/ALT FUNDING	DAVIS BACON	RELEVANT PROJECT EXAMPLE
GRANT CURTAN, <i>Director of Pre-Construction</i>	✓	✓	✓	✓	✓	✓	Deltona MS Replacement
MIKE BUCKLAND, <i>Pre-Construction Manager</i>	✓	✓	✓	✓	✓	✓	Lincoln Park Academy
CANDICE SCOTLAND, <i>Director of Diversity & Inclusion</i>	✓	✓	✓	✓	✓	✓	Deltona MS Replacement
BRIAN GARCIA, <i>Sr. Project Manager</i>	✓	✓	✓	✓	✓	✓	Lincoln Park Academy
JERED SMITH, <i>Project Manager</i>	✓	✓	✓	✓	✓	✓	Chalmette High School
STEVE GLASER, <i>General Superintendent</i>	✓	✓	✓	✓	✓	✓	Chalmette High School
JOE MAYHEW, <i>Superintendent</i>	✓	✓	✓	✓	✓	✓	Lincoln Park Academy
JACK MEREDITH, <i>Virtual Construction Manager</i>	✓	✓	✓	✓	✓	✓	Deltona MS Replacement
LINDA FRENCH, <i>Project Accountant/Administrator</i>	✓	✓	✓	✓	✓	✓	Lincoln Park Academy
BRAD WILL, <i>Project Executive</i>	✓	✓	✓	✓	✓	✓	Hosford K8 School
BRANDON NOBILE, <i>Project Executive</i>	✓	✓	✓	✓	✓	✓	Lincoln Park Academy
ROGER BAUM, <i>Executive Vice President</i>	✓	✓	✓	✓	✓	✓	Deltona MS Replacement

4

EXPERIENCE WITH SPECIAL FACILITIES CONSTRUCTION ACCOUNT PROJECTS AS WELL AS PHASED FUNDING



6

SFCA
Projects
Successfully
Managed
By Our
Project
Team

100%

Of Our Team Has
Managed Projects
With Multiple
Funding
Mechanisms

\$200M+

Combined Total
SFCA Project
Value Managed By
This Team



CASE STUDY: LINCOLN PARK ACADEMY

LINCOLN PARK ACADEMY



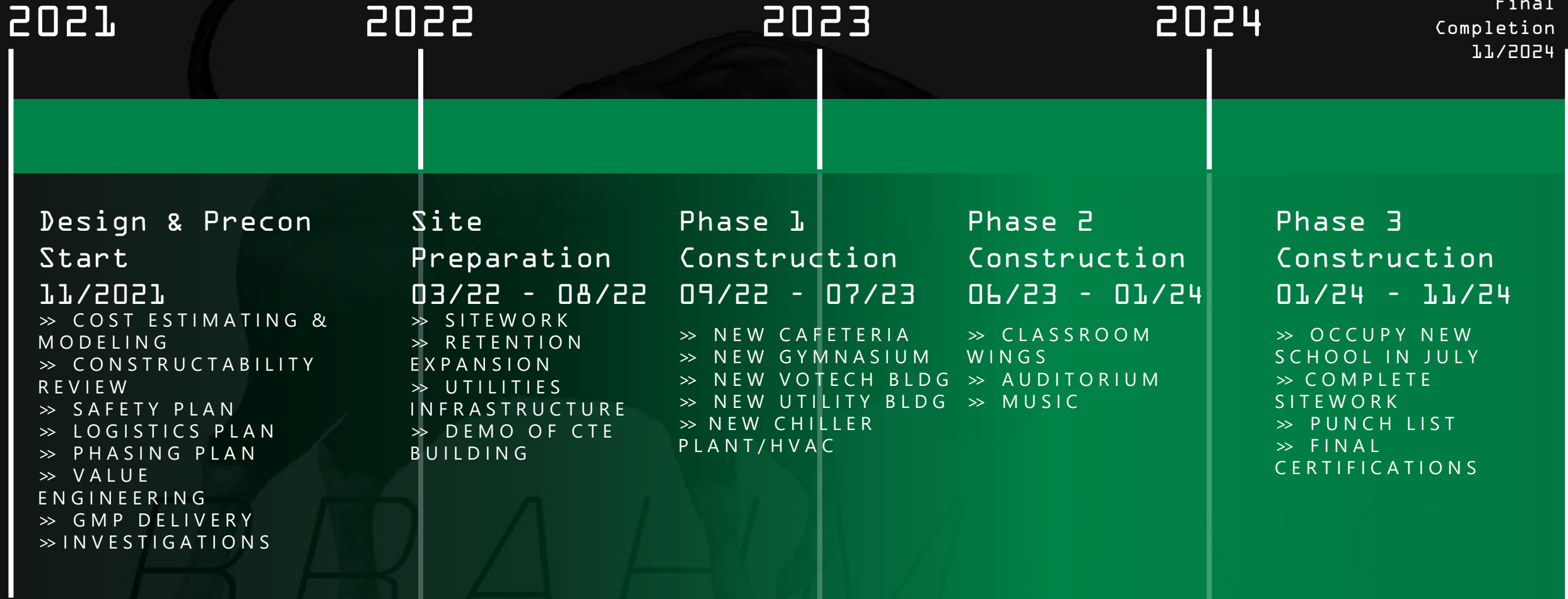
COUNTDOWN TO A SUCCESSFUL PROJECT

- 4** FUNDING SOURCES
- 3** AUDITING AGENCIUES
- 2** GMP'S/CONTRACTS
- 1** SUCCESSFUL PROJECT

» A great example of a project with similar funding mechanisms to Okeechobee High School was the Lincoln Park Academy Phased Modernization for St. Lucie Schools. Our team members were required to submit four different pay applications to account for the many different funding requirements. For instance, the temporary campus and demolition package was funded directly by the District and therefore was treated as a separate project, while the sitework and each building was funded individually with federal funds provided by the American Reinvestment and Recovery Act (ARRA) with each requiring completely separate accounting. The ARRA funding was supplied to district via Qualified School Construction Bonds (QSCB's) which included Davis-Bacon Act certified wage requirements. One ingenious method our team used to track adherence to the Davis-Bacon payroll requirements was to issue "hard hat stickers" that were given to all employees and subcontracted employees on site as part of the Site Safety Orientation and to verify compliance with the Jessica Lunsford Act. These staff lists were correlated against the certified payrolls that each subcontractor submitted weekly. In this manner, it was possible to turn over all documentation at the end of the project and satisfy three audits from the different agencies involved. Included with all of the accounting, our team members also produced a "Bell Curve" budget to alert each agency as to when their funding was to be expended during the construction schedule. All of this experience will serve Okeechobee well in expending the Special Facilities Funds that have been allotted for this project.

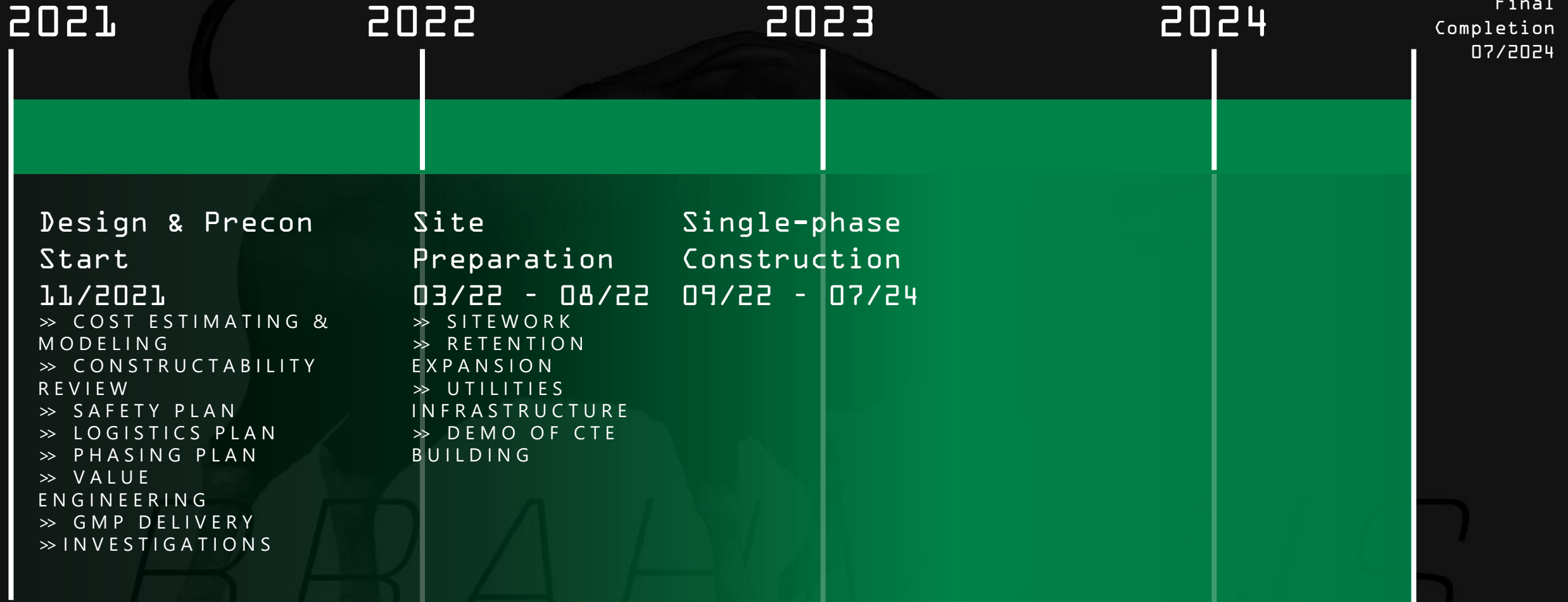


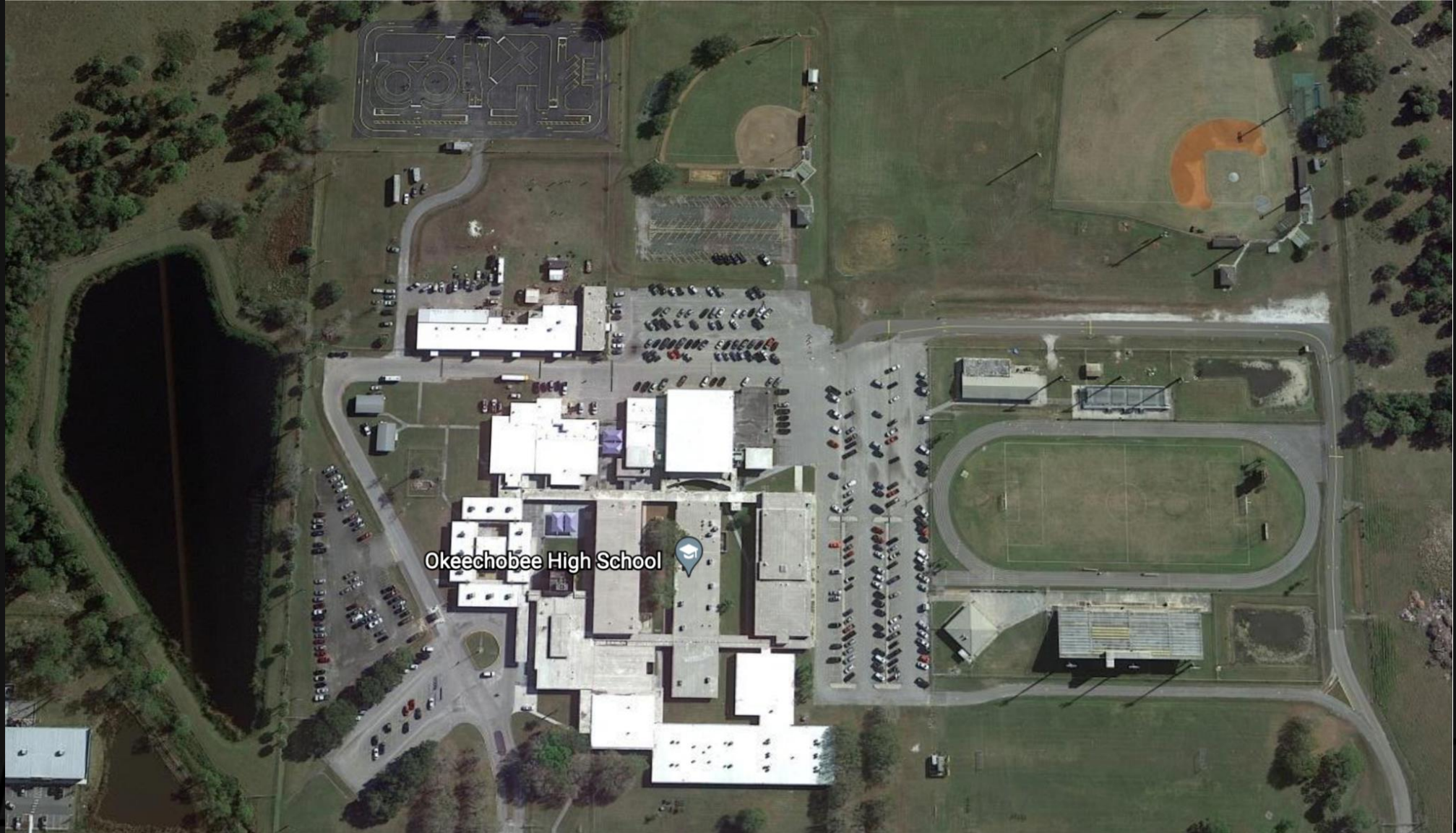
CONCEPTUAL MILESTONE SCHEDULE





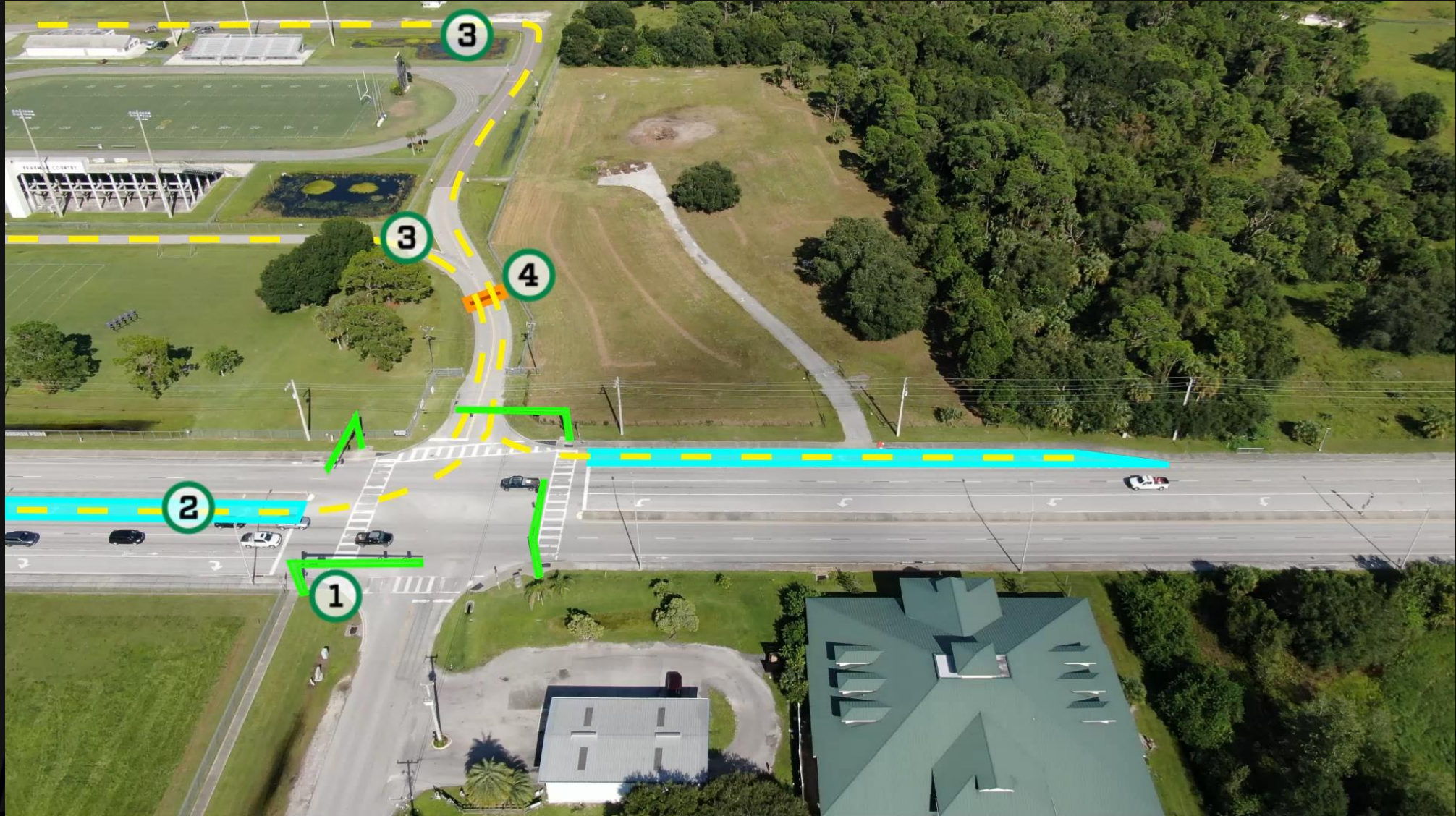
CONCEPTUAL MILESTONE SCHEDULE

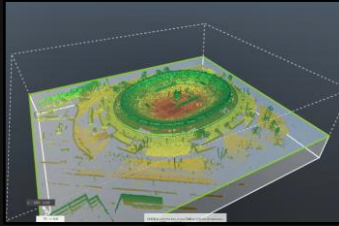




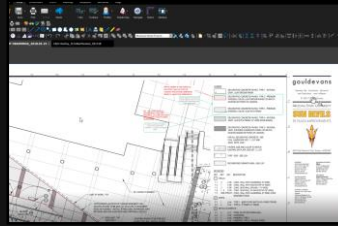
6

CONSTRUCTION PHASING & STAGING PROPOSAL FOR OKEECHOBEE





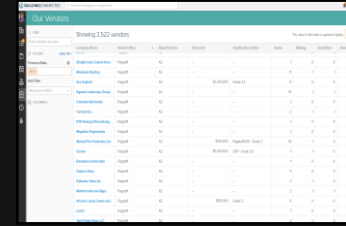
LASER SCANNING



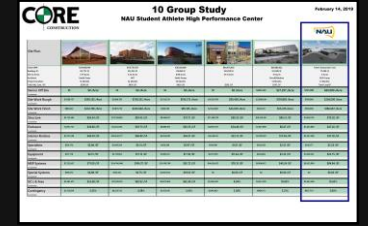
CONSTRUCTABILITY REVIEW



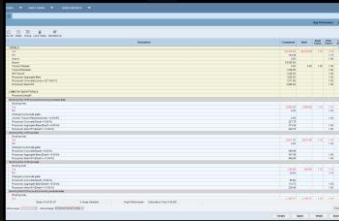
SUBCONTRACTOR RFQ'S



PRE-QUALIFIED SUBCONTRACTORS



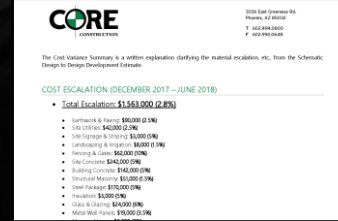
10-GROUP HISTORIC COST MODEL



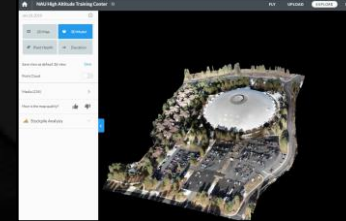
CUT/FILL ANALYSIS



LOGISTICS PLANS



VARIANCE TRACKING



DRONE TECHNOLOGY



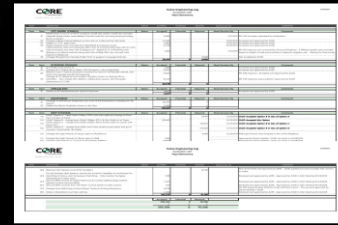
OVERALL PROJECT BUDGET DEVELOPMENT



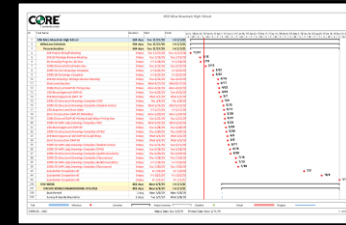
SITE INVESTIGATIONS



ON-SCREEN TAKE-OFF



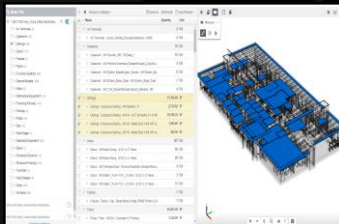
VALUE ENGINEERING



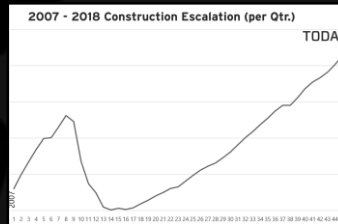
COMPREHENSIVE SCHEDULING



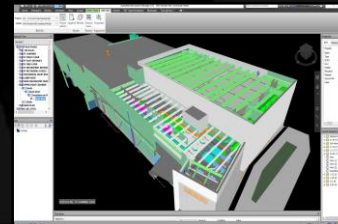
OPTIONS STUDIES



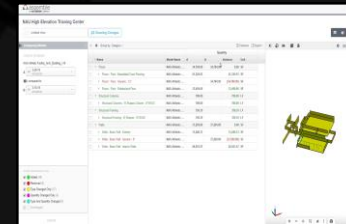
3-D MODEL TAKE-OFF'S



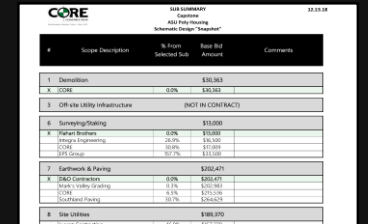
ESCALATION TRACKING



REVIT MODELING



ASSEMBLE COST/MODEL INTEGRATION



BID PACKAGING



Large Campus K-12 Schools 10 Group Study

Horizon West High
School
Orange



Lake Buena Vista High
School
Orange



Sumner High School
Hillsborough



Water Spring Middle
School
Orange



	Per GSF	Per Student	Per GSF	Per Student Station	Per GSF	Per Student Station	Per GSF	Per Student Station
Cost of Work	222.07	30,809	229.66	30,816	248.63	22,101	205.60	28,660
0 - GENERAL REQUIREMENTS	6.02	836	5.54	743	1.19	106	4.92	686
1B-SITE DEVELOPMENT & LANDSCAPING	33.98	4,714	38.17	5,122	40.06	3,561	28.21	3,932
1C - MISC SITE & ATHLETIC FIELDS	9.78	1,357	9.83	1,319	15.74	1,399	3.73	520
1D-BUILDING STRUCTURE	44.25	6,138	46.22	6,202	45.02	4,002	42.49	5,923
1F-BUILDING ENVELOPE	8.59	1,191	8.85	1,187	10.42	927	9.48	1,321
1G-DOORS & WINDOWS	10.28	1,426	11.41	1,532	11.79	1,048	7.31	1,018
1H-FINISHES	19.91	2,763	21.51	2,887	29.20	2,596	22.94	3,197
1I-SPECIALTIES	2.52	350	2.83	379	4.80	426	3.20	446
1J-EQUIPMENT & FURNISHINGS	9.34	1,295	9.60	1,288	8.71	774	9.31	1,298
1K-VERTICAL CONVEYANCE	0.52	72	0.55	73	0.64	57	0.74	103
1L-MEP SYSTEMS	76.89	10,667	75.15	10,084	81.06	7,206	73.29	10,216
Other Costs	24.49	3,397	27.01	3,624	47.00	4,178	33.54	4,675
2A - GENERAL CONDITIONS & BONDS	10.19	1,413	10.65	1,428	18.45	1,640	11.64	1,623
2B - CONTINGENCY, INSURANCE & CM FEE	14.30	1,984	16.36	2,195	28.55	2,538	21.90	3,052
Grand Total	246.56	34,206	256.66	34,440	295.63	26,279	239.14	33,335

Deltona Middle School

2019.10.14 Show Changes

Name	Quantity	Unit	Model N...	Count (EA)	Ar
Specialty Equipment	2,312	EA		2,312	
Lighting Fixtures	2,358	EA	Assembl...	2,358	
Lighting Fixtures : 2x4 Parabolic : 2' x 4' (2 Lamps)	1,225	EA	Assembl...	1,225	
Lighting Fixtures : SHS_Downlight - Recessed Can : 6" In...	252	EA	Assembl...	252	
Lighting Fixtures : Ceiling Light - Linear Box1 : 1'x4'(1 Lam...	116	EA	Assembl...	116	
Lighting Fixtures : Ceiling Light - Linear Box : 1'x4'(2 Lamp...	115	EA	Assembl...	115	
Lighting Fixtures : 2x4 Parabolic : 1' x 8' (2 Lamps)	108	EA	Assembl...	108	
Lighting Fixtures : 2x4 Parabolic : 1' x 4' (2 Lamps)	100	EA	Assembl...	100	
Lighting Fixtures : Ceiling Light - Linear Box1 : 6"x48" (1 L...	99	EA	Assembl...	99	
Lighting Fixtures : Troffer Light - 2x4 Parabolic- CB : 2'x4'(...	83	EA	Assembl...	83	
Lighting Fixtures : Pendant Light - Linear - 2 Lamp : 96" - ...	77	EA	Assembl...	77	
Lighting Fixtures : SHS_Downlight - Surface Mounted Can...	70	EA	Assembl...	70	
Lighting Fixtures : 11 31_Ceiling_based_projector : 11 31_...	68	EA	Assembl...	68	
Lighting Fixtures : Ceiling Light - Linear Box : 2'x4'(2 Lamp...	31	EA	Assembl...	31	
Lighting Fixtures : Pendant Light - Linear - 2 Lamp : 48" - ...	14	EA	Assembl...	14	
Walls				2,001	
Structural Framing	41,141.25	LF		1,109	
Structural Framing : W-Wide Flange : W18X35	3,349.55	LF	18071_V...	112	
Structural Framing : K-Series Bar Joist-Angle Web : 18K4	2,250.97	LF	18071_V...	75	
Structural Framing : K-Series Bar Joist-Angle Web : 30K9	3,472.17	LF	18071_V...	68	
Structural Framing : W-Wide Flange : W18X40	2,746.20	LF	18071_V...	68	
Structural Framing : K-Series Bar Joist-Angle Web : 20K5	1,598.19	LF	Assembl...	63	
Structural Framing : K-Series Bar Joist-Angle Web : 24K8	2,211.54	LF	18071_V...	53	
Structural Framing : W-Wide Flange : W16X26	1,070.30	LF	18071 V...	43	



7

PRE

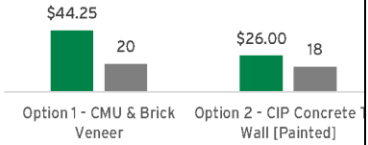
PRE-CON TOOLS & SERVICES



Background

This document is a summary of the potential design options for the exterior wall system of the Okeechobee High School Replacement project. These options will be utilized on this project. This study will examine the constructability and schedule duration, durability and maintenance requirements.

Cost/Benefit Summary



Options Analysis

The following analysis rates the attributes of each system. The system that provides the most benefits and a score of 1 meaning it is the best option.

Option 1 - CMU & Brick Veneer

- First Cost
- Constructability
- Schedule Duration
- Desired Aesthetics
- Durability / Weather Barrier
- Long-Term Maintenance Costs

TOTAL SCORE

Option 2 - CIP Concrete Wall [Painted]

- First Cost
- Constructability
- Schedule Duration
- Desired Aesthetics
- Durability / Weather Barrier
- Long-Term Maintenance Costs

TOTAL SCORE

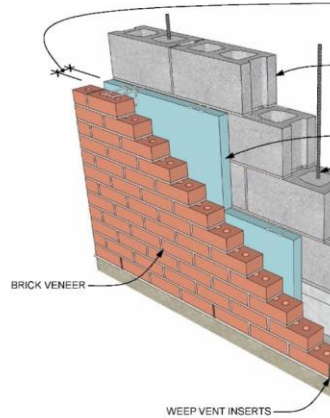
Option 3 - Architectural Precast with Brick Inlay

- First Cost
- Constructability
- Schedule Duration
- Desired Aesthetics
- Durability / Weather Barrier
- Long-Term Maintenance Costs

TOTAL SCORE

Detailed Cost Breakdown - Option 1

Description
Option 1 - CMU & Brick Veneer
04-2000 UNIT MASONRY & BRICK VENEER
3/4" Rigid Insulation
8" CMU Wall
Brick Veneer
07-1000 WATERPROOFING / CAULKING / SEALING
Caulking / Joint Sealants
Fluid Applied Damp Proofing
09-2000 METAL FRAMING & DRYWALL
5/8" Gyp Board over 2 1/2" metal furring



Detailed Cost Breakdown - Option 2

Description
Option 2 - CIP Concrete Tilt Wall [Painted]
03-3000 CONCRETE
7 1/4" Tilt Wall Panel
07-1000 WATERPROOFING / CAULKING / SEALING
Caulking / Joint Sealants
09-2000 METAL FRAMING & DRYWALL
5/8" Gyp Board over 3 5/8" metal studs with batt insulation
09-9000 PAINTING
Textured Exterior Paint



Detailed Cost Breakdown - Option 3

Description	Total Cost Per SF
Option 3 - Architectural Precast with Brick Inlay	36.25
03-8800 ARCHITECTURAL PRECAST	29.50
Insulated Precast Wall with Inlaid Thin Brick Veneer	29.50
07-1000 WATERPROOFING / CAULKING / SEALING	2.10
Caulking / Joint Sealants	2.10
09-2000 METAL FRAMING & DRYWALL	4.65
5/8" Gyp Board over 2 1/2" metal furring	4.65





PK-8 SCHOOL UU
GMP - 3/1/21 PERMIT SET

09-2000 METAL FRAMING & DRYWALL

ESTIMATE

Rank	Summary of Bidders	Bid Total	USE	Horus	Garrard	CWJ Universal	Carter	WAL-MARK	FORD DRYWALL
1	Horus	\$ 1,157,897		James Graham 336-339-3939 james.graham@horus-cs.com Tampa 03.26.2021	Servi Sosa 813-217-2395 servi.sosa@garrardinc.com Winter Haven 03.26.2021	M. (Pam) Washington 954-557-2622 pam.washington@cwjuniversal.com Fort Lauderdale 03.26.2021	Kevin Carter 813-323-7466 kcarter@cwjuniversal.com Seffner, FL 03.26.2021	Kevin Barnhart 813-348-4711 kbarnhart@wm-nccusa.com Tampa, FL 03.26.2021	
2	Garrard	\$ 1,775,000							
3	WAL-MARK	\$ 3,373,863							
4	FORD DRYWALL	\$ 3,404,208							
5	CWJ Universal	\$ 3,456,412							
6	Carter	\$ 3,516,318							
7									
8									
GRAND TOTAL				\$1,157,897	\$1,775,000	\$3,456,412	\$3,516,318	\$3,373,863	\$3,404,208
PLUG NUMBERS INCLUDED IN GRAND TOTAL						\$24,968			
TOTAL COST PER									

BASE BID (PER PLANS AND SPECS)	✓	✓	✓	\$3,306,937	\$2,966,318	✓	✓		
ADDENDUM(S)	O	✓	✓		\$550,000	✓	✓	\$425,000	✓
CORE INSURANCE REQUIREMENTS MET	✓	✓	✓			✓	✓		✓
REVIEWED SAMPLE SUBCONTRACT TERMS	✓	✓	✓			✓	✓		✓
PREQUALIFICATION SUBMITTED	✓	✓	✓			✓	✓		✓
INCLUDES USE OF TEXTURA & FEE	✓	✓	✓			✓	✓		✓
JLA BADGING FOR ALL ON-SITE EMPLOYEES	✓	✓	✓			✓	✓		✓
LABOR	✓	✓	✓			✓	✓		✓
MATERIAL	✓	✓	✓			✓	✓		✓
DELIVERY	✓	✓	✓			✓	✓		✓
ALL APPLICABLE TAXES	✓	✓	✓			✓	✓		✓
SHOP DRAWINGS	✓	✓	✓			✓	✓		✓
HOISTING / LIFTS	✓	✓	✓			✓	✓		✓
SCAFFOLDING	✓	✓	✓			✓	✓		✓
DAILY CLEAN-UP (FOR OWN TRADE)	✓	✓	✓			✓	✓		✓
INCLUDE COMPOSITE CLEAN OF \$50,000	✓	✓	✓			✓	✓		✓
PERMIT FEES	O	✓	✓			✓	O		O
AREAS:									
SITE	O						O		
BUILDING 1 - 2-STORY ADMIN	✓	\$298,970	✓			✓	✓	\$311,816	✓
BUILDING 2 - 3-STORY CLASSROOM	✓	\$707,312	✓			✓	✓	\$750,391	✓
BUILDING 3 - GYMNASIUM	✓	\$151,615	✓			✓	✓	\$157,012	✓
BUILDING 4 - MULTIPURPOSE	✓		✓	\$415,000		✓	✓	\$379,395	✓
BUILDING 5 - 3-STORY CLASSROOM	✓		✓	\$1,360,000		✓	✓	\$1,350,249	✓
SPECIFICATIONS:									

CORE POTENTIAL COST SAVINGS LOG

#	DESCRIPTION	POTENTIAL SAVINGS	CLASSIFICATION	PENDING OWNER REVIEW	MAYBE	REJECTED	NOT FEASIBLE	ACCEPTED
GRAND TOTAL		\$ (3,273,574)		\$ -	\$ (578,570)	\$ (564,431)	\$ (352,459)	\$ (1,778,114)
A SITE		\$ (14,071)		\$ -	\$ -	\$ -	\$ -	\$ (14,071)
A1	USE CHAINLINK GATES IN LIEU OF ALUM PICKET SITE GATES	\$ -	NOT FEASIBLE	\$ -	\$ -	\$ -	\$ -	\$ -
A2	USE GALV. CHAINLINK FENCE IN LIEU OF VINYL COVERED CHAINLINK (65% QTY)	\$ (14,071)	ACCEPTED	\$ -	\$ -	\$ -	\$ -	\$ (14,071)
B STRUCTURE & BUILDING EXTERIOR		\$ (677,166)		\$ -	\$ (33,600)	\$ (54,986)	\$ (44,580)	\$ (544,000)
B1	USE PVC KEE SINGLE PLY ROOFING IN LIEU OF MODIFIED BITUMEN ROOFING	\$ (163,000)	ACCEPTED	\$ -	\$ -	\$ -	\$ -	\$ (163,000)
B2	DELETE AUTOMATIC ENTRANCE DOORS	\$ (120,000)	ACCEPTED	\$ -	\$ -	\$ -	\$ -	\$ (120,000)
B3	DELETE THERM. BROKEN WINDOWS, USE SINGLE PANE IN LIEU OF INSULATED GLASS	\$ -	NOT FEASIBLE	\$ -	\$ -	\$ -	\$ -	\$ -
B4	CONVERT ALUM COVERED AREAS TO STRUCTURAL STEEL & STANDING SEAM ROOFING	\$ -	NOT FEASIBLE	\$ -	\$ -	\$ -	\$ -	\$ -
B5	DELETE OR LESSEN HEIGHTS FOR CONCRETE PIERS AT CANOPIES	\$ -		\$ -	\$ -	\$ -	\$ -	\$ -
B6	REDUCE HEIGHTS OF BUILDINGS (1' BLDG. 3&4, 2' BLDG 7 STAGE AREA)	\$ (42,851)	ACCEPTED	\$ -	\$ -	\$ -	\$ -	\$ (42,851)
B7	USE 4" THICK SOG IN LIEU OF 5" SOG	\$ (49,500)	ACCEPTED	\$ -	\$ -	\$ -	\$ -	\$ (49,500)
B8	REDUCE WALKWAY CANOPY WIDTH TO 12'-6"	\$ (44,580)	NOT FEASIBLE	\$ -	\$ -	\$ -	\$ (44,580)	\$ -
B9	REDUCE WALKWAY CANOPY WIDTH TO 10'-6"	\$ (98,240)	ACCEPTED	\$ -	\$ -	\$ -	\$ -	\$ (98,240)
B10	MISC. ALUM CANOPY RELATED OPTIONS	\$ -		\$ -	\$ -	\$ -	\$ -	\$ -
B11	SREF WALKWAY CANOPIES OPTION 1	\$ (33,600)	MAYBE	\$ -	\$ (33,600)	\$ -	\$ -	\$ -
B12	SREF WALKWAY CANOPIES OPTION 2	\$ (36,400)	REJECTED	\$ -	\$ -	\$ (36,400)	\$ -	\$ -
B13	EXTERNAL DOWNSPOUTS AND SCUPPERS IN LIEU OF INTERNAL STORM PIPING	\$ (49,409)	ACCEPTED	\$ -	\$ -	\$ -	\$ -	\$ (49,409)
B14	REDUCE BUS CANOPY LENGTH TO 160'	\$ (21,000)	ACCEPTED	\$ -	\$ -	\$ -	\$ -	\$ (21,000)
B15	DELETE COURTYARD STAIRS, REPLACE WITH INDIV. STAIR & ELEV BLDG 3&4	\$ (18,586)	REJECTED	\$ -	\$ -	\$ (18,586)	\$ -	\$ -
C INTERIOR FINISHES & FIXTURES		\$ (685,891)		\$ -	\$ -	\$ (56,015)	\$ -	\$ (629,876)
C1	USE FI-FOIL IN LIEU OF RIGID BOARD	\$ (155,600)	ACCEPTED	\$ -	\$ -	\$ -	\$ -	\$ (155,600)
C2	USE ALTERNATE FLOORING MATERIALS - (ALT. TILE SIZE, CARPET \$30/SY ALLOW.) USE FIXED HEIGHT STUDENT LAB TABLES IN LIEU OF SPECIFIED (LEAVE ONE ADJ. @ CLASSROOM)	\$ (89,473)	ACCEPTED	\$ -	\$ -	\$ -	\$ -	\$ (89,473)
C3	USE VERTEX STUDENT LAB TABLES IN LIEU OF SPECIFIED	\$ (24,000)	ACCEPTED	\$ -	\$ -	\$ -	\$ -	\$ (24,000)
C4	USE CULTURED MARBLE IN LIEU OF SOLID SURFACE WINDOW SILLS	\$ (43,243)	ACCEPTED	\$ -	\$ -	\$ -	\$ -	\$ (43,243)
C6	ADD POLISHED CONCRETE TO PROJECT ESTIMATE	\$ 67,550	ACCEPTED	\$ -	\$ -	\$ -	\$ -	\$ 67,550
C7	USE LVT IN LIEU OF POLISHED CONCRETE	\$ 27,985	REJECTED	\$ -	\$ -	\$ 27,985	\$ -	\$ -
C8	REDUCE GYM LOCKER COUNTS	\$ (145,410)	ACCEPTED	\$ -	\$ -	\$ -	\$ -	\$ (145,410)
C9	DELETE SHUTTER FROM ESTIMATE (SHELTER CONDITION FOR BLDG 4 & 5)	\$ (239,700)	ACCEPTED	\$ -	\$ -	\$ -	\$ -	\$ (239,700)
D EQUIPMENT		\$ (356,911)		\$ -	\$ -	\$ (10,000)	\$ (14,879)	\$ (332,032)
D1	REDUCE GYMNASIUM SEATING & GYM SIZE (72'X8')	\$ (73,840)	ACCEPTED	\$ -	\$ -	\$ -	\$ -	\$ (73,840)
D2	REDUCE BLEACHER SEATING	\$ -	REJECTED	\$ -	\$ -	\$ -	\$ -	\$ -
D3	REDUCTION IN BLEACHER CONC. PAD BUDGET	\$ (43,840)	ACCEPTED	\$ -	\$ -	\$ -	\$ -	\$ (43,840)
D4	CHANGE ALUM. VERTICAL PICKET FENCE (BLEACHERS) TO CHAIN LINK FENCE (SIDE & BACK)	\$ (34,612)	ACCEPTED	\$ -	\$ -	\$ -	\$ -	\$ (34,612)
D5	BUDGET REDUCTION - CONCESSION STAND EQUIPMENT	\$ (69,104)	ACCEPTED	\$ -	\$ -	\$ -	\$ -	\$ (69,104)
D6	RESIDENTIAL APPLIANCES - OWNER FURNISHED OWNER INSTALLED	\$ (40,000)	ACCEPTED	\$ -	\$ -	\$ -	\$ -	\$ (40,000)
D7	KILN - OWNER FURNISHED CONTRACTOR INSTALLED	\$ (10,000)	REJECTED	\$ -	\$ -	\$ (10,000)	\$ -	\$ -
D8	CONSIDER REDUCED EQUIPMENT AT CONCESSION STAND	\$ (14,879)	NOT FEASIBLE	\$ -	\$ -	\$ -	\$ (14,879)	\$ -
D9	CHANGE UDS SYSTEM TO STANDARD WALL AND INDIVIDUAL HOODS	\$ -		\$ -	\$ -	\$ -	\$ -	\$ -
D10	DELETE GYM DIVIDING CURTAIN	\$ (14,600)	ACCEPTED	\$ -	\$ -	\$ -	\$ -	\$ (14,600)
D11	DELETE (2) FUME HOODS, FLAM. STORAGE CABINETS, EYE WASH STATIONS AND ASSOCIATED DUCTWORK IN BLDG. 4	\$ (56,036)	ACCEPTED	\$ -	\$ -	\$ -	\$ -	\$ (56,036)
E MEP SYSTEMS		\$ (1,539,535)		\$ -	\$ (544,970)	\$ (443,430)	\$ (293,000)	\$ (258,135)
E1	ELECTRICAL DESIGN REVIEW	\$ -		\$ -	\$ -	\$ -	\$ -	\$ -
E2	ALT. AIR COOLED HVAC SYSTEM	\$ (245,000)	REJECTED	\$ -	\$ -	\$ (245,000)	\$ -	\$ -
E3	ALT. AIR COOLED + ICE TANK SYSTEM	\$ (165,000)	NOT FEASIBLE	\$ -	\$ -	\$ -	\$ (165,000)	\$ -
E4	VAV AND AIR DISTRIBUTION ALT. CLASSROOM OPTION A	\$ (44,800)	NOT FEASIBLE	\$ -	\$ -	\$ -	\$ (44,800)	\$ -
E5	VAV AND AIR DISTRIBUTION ALT. CLASSROOM OPTION B	\$ (83,200)	NOT FEASIBLE	\$ -	\$ -	\$ -	\$ (83,200)	\$ -

ACTION	PENDING OWNER REVIEW	MAYBE	REJECTED	NOT FEASIBLE	ACCEPTED
	\$ -	\$ -	\$ -	\$ -	\$ -
	\$ -	\$ -	\$ -	\$ -	\$ -
	\$ -	\$ -	\$ -	\$ -	\$ -
ED	\$ -	\$ -	\$ (9,130)	\$ -	\$ -
	\$ -	\$ -	\$ -	\$ -	\$ -
ED	\$ -	\$ -	\$ -	\$ -	\$ (2,800)
ED	\$ -	\$ -	\$ -	\$ -	\$ (3,000)
ED	\$ -	\$ -	\$ (4,000)	\$ -	\$ -
ED	\$ -	\$ -	\$ -	\$ -	\$ (4,800)
ED	\$ -	\$ -	\$ -	\$ -	\$ (16,300)
ED	\$ -	\$ -	\$ (11,000)	\$ -	\$ -
E	\$ -	\$ (56,370)	\$ -	\$ -	\$ -
	\$ -	\$ -	\$ -	\$ -	\$ -
ED	\$ -	\$ -	\$ -	\$ -	\$ (118,000)
	\$ -	\$ -	\$ -	\$ -	\$ -
ED	\$ -	\$ -	\$ (7,200)	\$ -	\$ -
ED	\$ -	\$ -	\$ -	\$ -	\$ (56,835)
	\$ -	\$ -	\$ -	\$ -	\$ -
ED	\$ -	\$ -	\$ (15,000)	\$ -	\$ -
ED	\$ -	\$ -	\$ (20,000)	\$ -	\$ -
	\$ -	\$ -	\$ -	\$ -	\$ -
ED	\$ -	\$ -	\$ -	\$ -	\$ (56,400)
ED	\$ -	\$ -	\$ (21,600)	\$ -	\$ -
ED	\$ -	\$ -	\$ (110,500)	\$ -	\$ -
E	\$ -	\$ (488,600)	\$ -	\$ -	\$ -
	\$ -	\$ -	\$ -	\$ -	\$ -

\$3.3M
Evaluated
\$1.8M
Accepted



BIDDING POLICIES

1

TRANSPARENT

- Pre-construction/GMP development
- Bid tabulation
- Audit protection

2

RISK MANAGEMENT

- Insurance Requirements
- Releases

3

SUBCONTRACTOR SELECTION

- Vetting/Pre-qualification
- E-verification

4

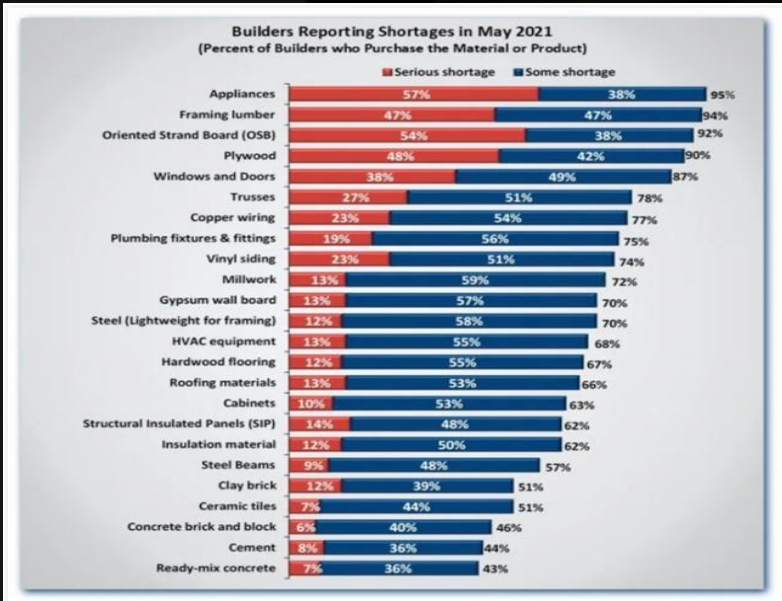
BID PACKAGING

- 6 bids per scope minimum
- Correct/Complete
- Local hiring



MATERIALS PRICING

- CONSTANT MONITORING OF MARKET CONDITIONS
- EARLY & FREQUENT COMMUNICATION WITH SUBS/VENDORS TO STAY AHEAD
- ACCELERATING PORTIONS OF DESIGN TO ALLOW FOR EARLY PROCUREMENT
- PROPOSING ALTERNATE MATERIALS OR BUILDING SYSTEMS MORE READILY AVAILABLE
- TAKING POSSESSION OF MATERIAL OR EQUIPMENT EARLY
- STORING ON-SITE IN CONTAINERS OR OFF-SITE IF NECESSARY



MARKET VOLATILITY

CONTRACT MANAGERS



OWNER DIRECT PURCHASE EXPERIENCE

52

Florida K-12 Projects With Owner Direct Purchase Savings In The Past 5 Years

25%

Average Percentage of Contract Procured Via Owner Direct Purchase On Those 52 Projects

\$1M+

Our Total DPO Savings Goal For Okeechobee High School Replacement

**49**

DAVIS-BACON WAGE
PROJECTS MANAGED BY
THIS TEAM

100%

OF OUR TEAM HAS
EXPERIENCE

\$700M+

TOTAL D-B WAGE
PROJECT VALUE MANAGED

DAVIS-BACON TRACKING & REPORTING

- Wage Determinations Clauses In Bid Packages
- Wage Determination Binding
- Hard Hat Stickers
- Applies To Entire Project
- Applies Only To Work On-site
- Certified Payroll
 - Overtime
 - Paid Weekly
 - Davis Bacon Posting
 - Verify Wage Determinations
 - Minimum Wage



FL K-12 TRACK RECORD IN THE PAST 5 YEARS



HIDDEN OAKS
ELEMENTARY SCHOOL



SUNRISE
ELEMENTARY SCHOOL



LAKE GEORGE
ELEMENTARY SCHOOL



FLANAGAN HIGH
SCHOOL ADDITION &
RENOVATION



BELLAMY ELEMENTARY
SCHOOL RENOVATION



JULE F. SUMNER
HIGH SCHOOL



SUNSHINE
ELEMENTARY SCHOOL



DELTONA MIDDLE
SCHOOL REPLACEMENT



SITE-UU NEW
MIDDLE SCHOOL

WHY CHOOSES CORE|REMNANT



EXPERIENCED, COHESIVE,
AND COMMITTED TEAM



INDUSTRY-LEADING TOOLS &
RESOURCES TO MAKE SURE WE
GET YOUR PROJECT RIGHT



UNWAVERING DEDICATION
TO SERVING OKEECHOBEE
COUNTY SCHOOLS!

BARABRAMANS



K-12 TRACK RECORD IN THE PAST 5 YEARS

BUDGET
\$16,000,000
GMP
\$14,608,000

HIDDEN OAKS
ELEMENTARY SCHOOL

BUDGET
\$8,900,000
GMP
\$8,900,000

SUNRISE
ELEMENTARY SCHOOL

BUDGET
\$8,900,000
GMP
\$8,900,000

LAKE GEORGE
ELEMENTARY SCHOOL

BUDGET
\$11,900,000
GMP
\$10,020,798

FLANAGAN HIGH
SCHOOL ADDITION &
RENOVATION

BUDGET
\$3,600,000
GMP
\$3,100,000

BELLAMY ELEMENTARY
SCHOOL RENOVATION

BUDGET
\$65,000,000
GMP
\$60,032,016

JULE F. SUMNER
HIGH SCHOOL

BUDGET
\$19,860,000
GMP
\$19,800,000

SUNSHINE
ELEMENTARY SCHOOL

BUDGET
\$52,100,000
GMP
\$51,148,000

DELTONA MIDDLE
SCHOOL REPLACEMENT

BUDGET
\$51,000,000
GMP
\$49,800,000

SITE-UU NEW
MIDDLE SCHOOL