



Florida Department of Health Okeechobee County

COVID -19 Situation Report

Week of 10/26/20



The Florida Department of Health continues to monitor the state's response efforts to COVID-19 in Florida, the changing Federal guidance, best practices during the COVID-19 disaster emergency and continues to adjust our response efforts as state officials and medical experts continuously monitor data during reopening to best combat this virus.

You may find the most current information on Florida's COVID-19 Data and Surveillance Dashboard that contains LIVE COVID-19 case information: <https://experience.arcgis.com/experience/96dd742462124fa0b38ddedb9b25e429>

Current Global Situation

As of October 28, 2020

Global Cases	Global Deaths
44,282,961	1,170,933

Current USA Situation

As of October 28, 2020

USA Cases	Deaths
8,817,851	227,177

Current Situation in Florida

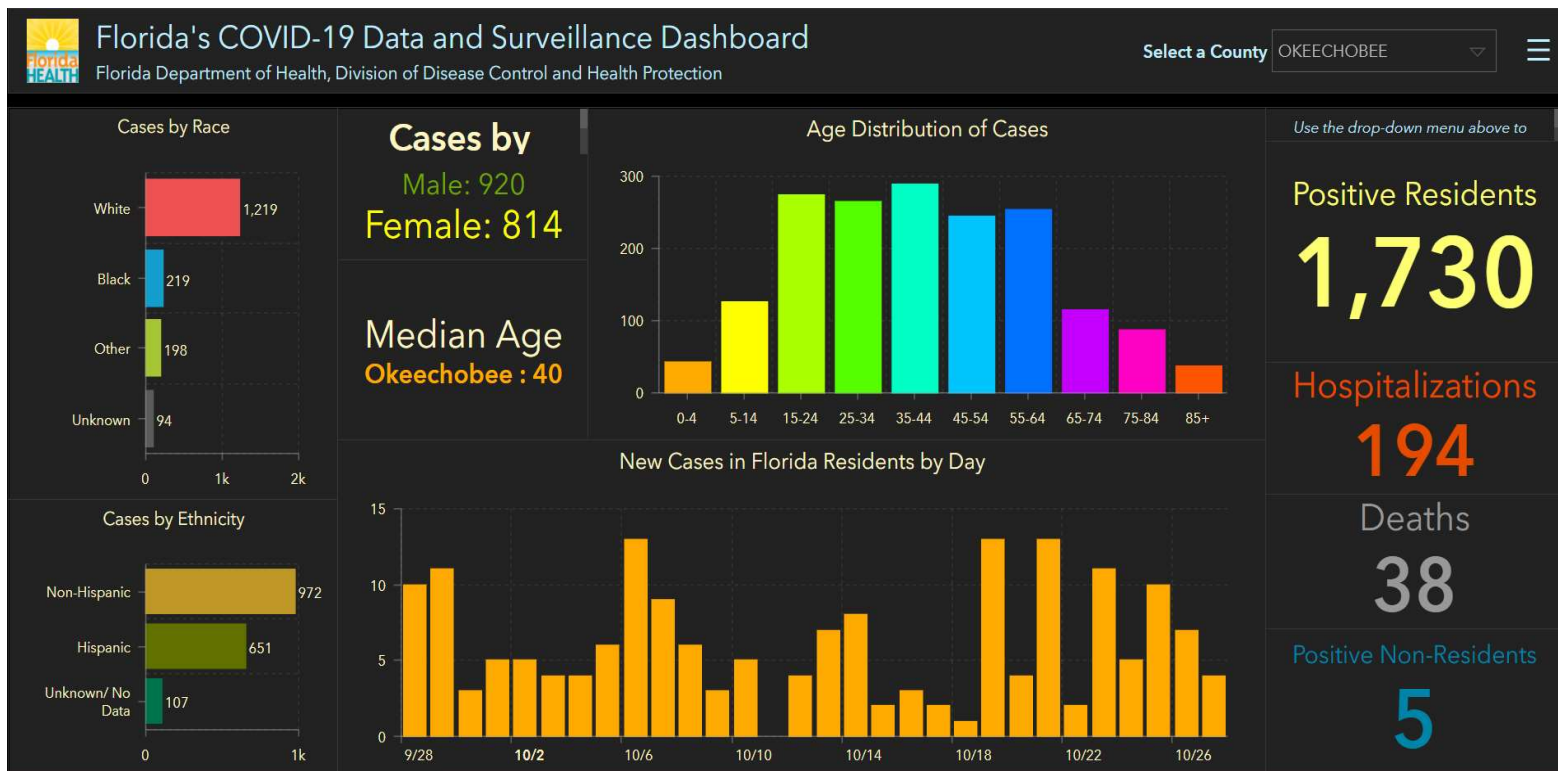
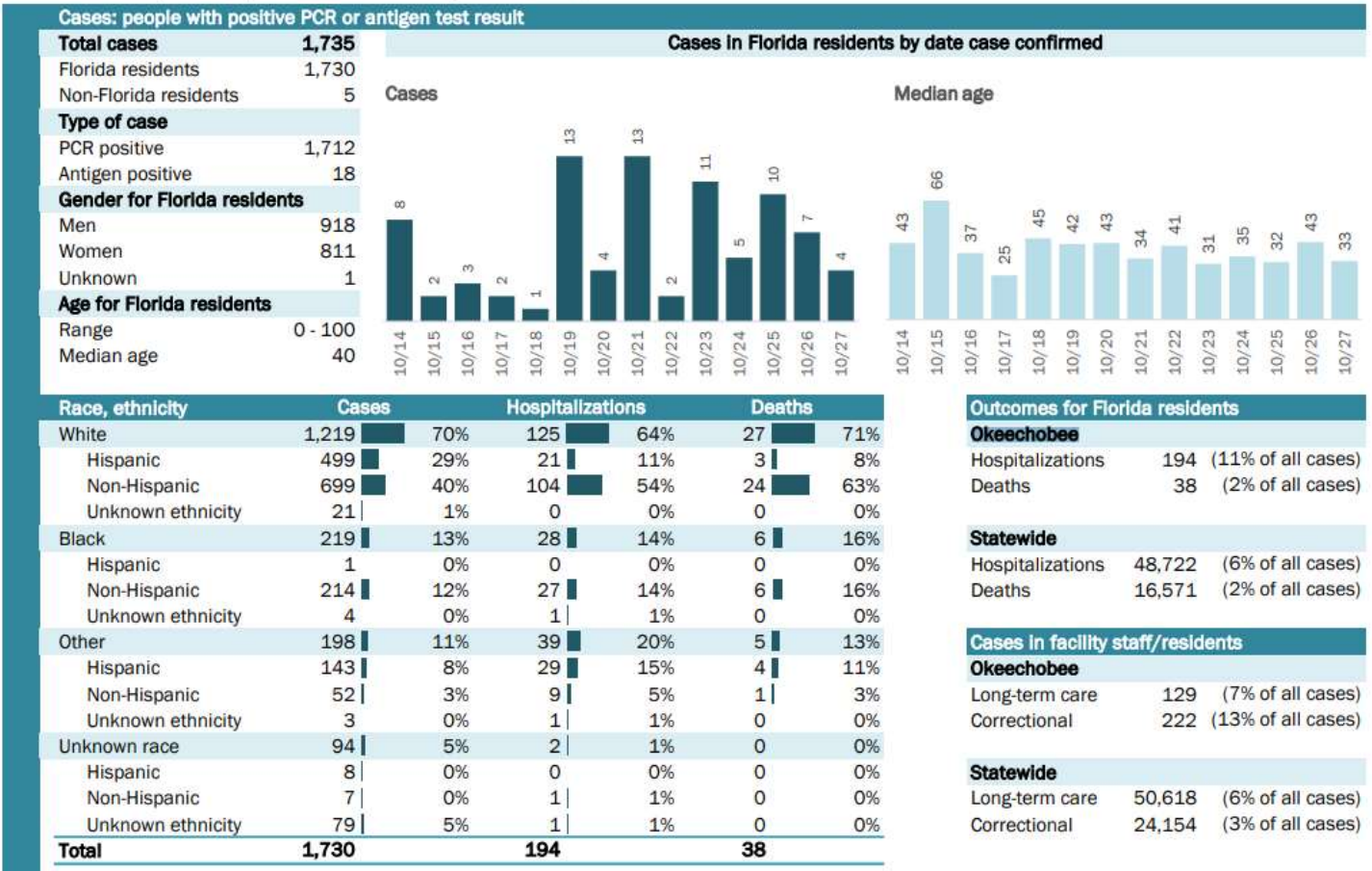
As of October 28, 2020

Total Cases	FL Resident Deaths
790,426	16,571

COVID-19: summary for Okeechobee County

Data through Oct 27, 2020 verified as of Oct 28, 2020 at 09:25 AM

Data in this report are provisional and subject to change.



Current Testing Activity

CDC Who should get tested: <https://www.cdc.gov/coronavirus/2019-ncov/symptoms-testing/testing.html>

DOH State Testing Sites: https://floridahealthcovid19.gov/testing-sites/?display_map=1&county=Okeechobee&city=

COVID-19: summary for Okeechobee County

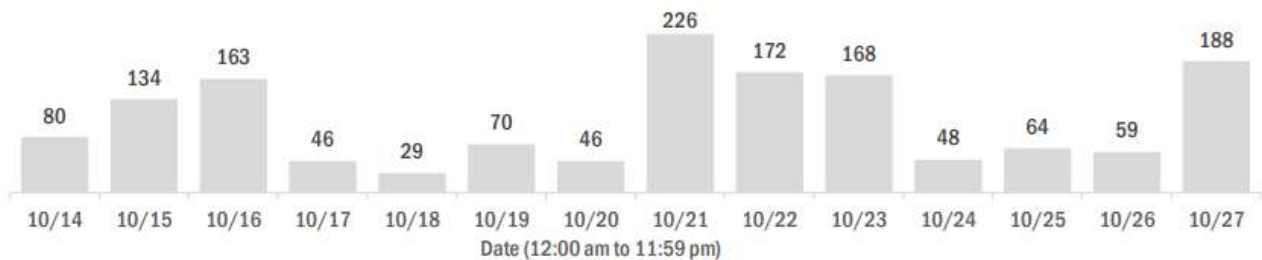
Data through Oct 27, 2020 verified as of Oct 28, 2020 at 09:25 AM

Data in this report are provisional and subject to change.

Laboratory testing for Florida residents over the past 2 weeks

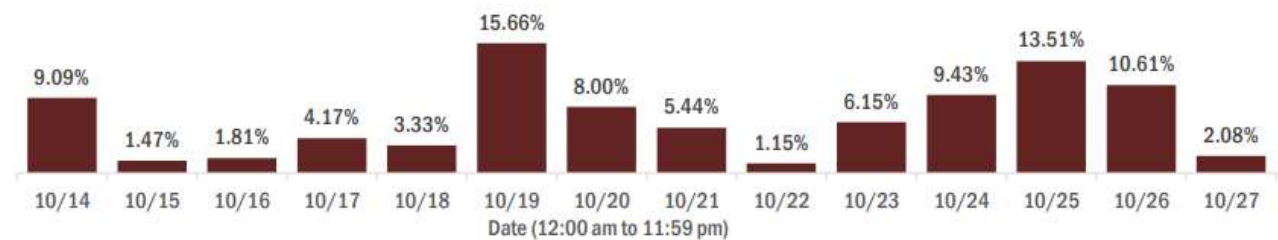
Number of Florida residents who tested negative per day

These counts include the number of people for whom the Department received negative PCR or antigen laboratory results by day. People who tested negative on multiple days will be included once for each day they are tested. Negative results for persons who have previously tested positive are excluded.

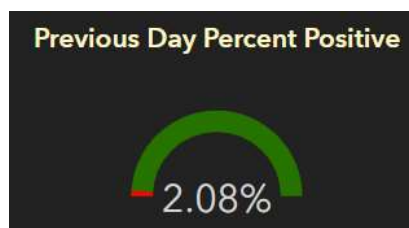


Percent positivity for new cases in Florida residents

These counts include the number of Florida residents for whom the department received PCR or antigen laboratory results by day. This percent is the number of people who test positive for the first time divided by all the people tested that day, excluding people who have previously tested positive.



The average positivity over the past 14 days is: 6.56%. ↑ 0.94% from previous 2-week period.



Antibody Results for Okeechobee County *Data as of October 1, 2020

County	Positive	Negative	Total Tested	Percent Positivity
Okeechobee	22	252	274	8.03%
State Total	50,676	475,588	526,404	9.63%

*state total includes inconclusive results



Florida Department of Health
Okeechobee County
1728 NW 9th Ave.
Okeechobee, FL 34972

FREE COVID-19 TESTING

Oral Swab

When & Where Is Testing?

Monday – Friday

8AM – 2PM *by Appointment Only*

Call: (863) 462-5800 *Press Option 3 Immediately*

How Long Until I Get My Results?

Approximately 48 Hours



Who Can Be Tested?

High priority vulnerable populations and must have symptoms:

- First Responders (EMS, Firefighters, Law Enforcement and Dispatchers) **can be asymptomatic*
- Healthcare Personnel
- School Employees & Students
- Long-Term Care Facilities
- Individuals Living or Working in Congregate Settings (Correctional, Homeless Shelter)
- Individuals Age 65+
- Individuals with Underlying Medical Conditions, including:
 - Cancer
 - Chronic Lung, Kidney, or Liver Disease
 - COPD (chronic obstructive pulmonary disease)
 - Diabetes
 - Serious Heart Conditions
 - Severe Obesity (BMI Greater Than 30)
 - Asthma
 - Sickle Cell Disease
- Pregnant Women
- Individuals Living in Households with a High-Risk Individual or Provide Care to High-Risk Individuals



Please Follow CDC Guidelines:

- Isolate from Others Until You Receive Test Results
- Do not go to School or Work if Symptomatic and Waiting for Results



School Reopening

Age Distribution of Okeechobee COVID-19 Cases:

Age group	All cases		New cases (10/27)		Hospitalizations		Deaths	
0-4 years	43	2%	1	25%	3	2%	0	0%
5-14 years	126	7%	0	0%	1	1%	0	0%
15-24 years	275	16%	1	25%	9	5%	0	0%
25-34 years	264	15%	0	0%	9	5%	2	5%
35-44 years	288	17%	0	0%	19	10%	1	3%
45-54 years	244	14%	2	50%	23	12%	1	3%
55-64 years	254	15%	0	0%	43	22%	9	24%
65-74 years	113	7%	0	0%	38	20%	3	8%
75-84 years	86	5%	0	0%	35	18%	12	32%
85+ years	37	2%	0	0%	14	7%	10	26%
Unknown	0	0%	0	0%	0	0%	0	0%
Total	1,730		4		194		38	

Hospitalization counts include anyone who was hospitalized at some point during their illness. It does not reflect the number of people currently hospitalized.
Other race includes any person with a race of American Indian/Alaskan native, Asian, native Hawaiian/Pacific Islander, or other.

All public-school parents and guardians are responsible for using the Daily Home Screening Tool to assess their children for COVID-like symptoms before the start of each school day. If after using the tool, parents are not sure their child is completely free of COVID-like symptoms, children should not attend school.

CDC Home Screening Tool: <https://www.cdc.gov/coronavirus/2019-ncov/downloads/community/schools-childcare/Daily-Home-Screening-for-Students-Checklist-ACTIVE-rev5A.pdf>

Department of Health Notification of Potential School Related COVID-19 Exposure:

The Florida Department of Health, in coordination with the School District of Okeechobee County, notify parents and individuals who may have been exposed to someone who may have been exposed to someone at school who has been confirmed with COVID-19.

Okeechobee County Schools	Total Positive COVID-19 Cases as of 10.24.20
Okeechobee High School	6
South Elementary School	2
Seminole Elementary School	3
North Elementary School	2
Central Elementary School	3
Yearling Middle School	3
Everglades Elementary School	3
Okeechobee Achievement Academy	2
Osceola Middle School	2
Okeechobee Freshman Campus	5
Total All 10 Public Schools	31

*not all positive cases have led to close contact exclusions

The Okeechobee County School District process has done well with **no known secondary exposures** to date.

COVID-19: Characteristics of cases in pediatric residents < 18 years old

Data as of 10/20/2020

Table of testing in Florida residents <18 years old by county of residence

This table includes PCR and antigen test results received by the Department of Health from the state public health laboratory (BPHL), as well as commercial and hospital laboratories.

County	Cases	Tested negative	Total tested	Percent positivity
Alachua	709	8,301	9,010	7.9%
Baker	105	719	824	12.7%
Bay	419	3,457	3,876	10.8%
Bradford	119	868	987	12.1%
Brevard	868	9,101	9,969	8.7%
Broward	8,909	52,653	61,562	14.5%
Calhoun	56	495	551	10.2%
Charlotte	177	2,018	2,195	8.1%
Citrus	272	2,330	2,602	10.5%
Clay	506	5,544	6,050	8.4%
Collier	1,502	7,196	8,698	17.3%
Columbia	305	2,044	2,349	13.0%
Dade	14,097	74,630	88,727	15.9%
Desoto	236	1,407	1,643	14.4%
Dixie	70	563	633	11.1%
Duval	3,031	29,934	32,965	9.2%
Escambia	954	8,642	9,596	9.9%
Flagler	196	1,431	1,627	12.0%
Franklin	76	634	710	10.7%
Gadsden	367	2,120	2,487	14.8%
Gilchrist	55	607	662	8.3%
Glades	47	140	187	25.1%
Gulf	97	608	705	13.8%
Hamilton	109	548	657	16.6%
Hardee	264	1,094	1,358	19.4%
Hendry	294	1,468	1,762	16.7%
Hernando	241	2,725	2,966	8.1%
Highlands	208	1,984	2,192	9.5%
Hillsborough	4,367	32,435	36,802	11.9%
Holmes	98	437	535	18.3%
Indian River	375	3,988	4,363	8.6%
Jackson	214	1,300	1,514	14.1%
Jefferson	51	402	453	11.3%
Lafayette	28	158	186	15.1%
Lake	741	7,626	8,367	8.9%

County	Cases	Tested negative	Total tested	Percent positivity
Lee	1,808	11,388	13,196	13.7%
Leon	908	8,506	9,414	9.6%
Levy	141	1,223	1,364	10.3%
Liberty	54	316	370	14.6%
Madison	159	827	986	16.1%
Manatee	1,544	11,699	13,243	11.7%
Marion	811	8,186	8,997	9.0%
Martin	598	2,924	3,522	17.0%
Monroe	189	1,473	1,662	11.4%
Nassau	195	2,074	2,269	8.6%
Okaloosa	556	4,582	5,138	10.8%
Okeechobee	234	1,234	1,468	15.9%
Orange	3,406	28,277	31,683	10.8%
Osceola	1,387	10,744	12,131	11.4%
Palm Beach	3,988	30,681	34,669	11.5%
Pasco	895	9,904	10,799	8.3%
Pinellas	1,813	17,214	19,027	9.5%
Polk	2,430	17,273	19,703	12.3%
Putnam	400	3,345	3,745	10.7%
Santa Rosa	608	5,087	5,695	10.7%
Sarasota	739	7,470	8,209	9.0%
Seminole	825	7,183	8,008	10.3%
St. Johns	596	7,715	8,311	7.2%
St. Lucie	755	5,511	6,266	12.0%
Sumter	136	973	1,109	12.3%
Suwannee	296	1,141	1,437	20.6%
Taylor	63	611	674	9.3%
Union	93	533	626	14.9%
Unknown	15	1,121	1,136	1.3%
Volusia	896	6,190	7,086	12.6%
Wakulla	135	1,097	1,232	11.0%
Walton	214	1,682	1,896	11.3%
Washington	84	670	754	11.1%
Total	67,134	488,461	555,595	12.1%

Multisystem Inflammatory syndrome in children (MIS-C) cases in Okeechobee residents <18 years old

County	Age	Gender	Race	Ethnicity	Diagnosis Date
Okeechobee	1	Male	Other	Hispanic	7/20/20

COVID -19: Your Health

The best way to prevent illness is to avoid being exposed to the virus. The Department recommends:

- Wear a mask or face covering in public to protect others
- Social Distance – Maintain 6 feet between you and others
- Avoid:
 - Crowds
 - Closed Spaces – poor ventilation
 - Close Contact (within 6 ft of someone with COVID for 15 mins or more) with people who are sick
- Wash hands often for at least 20 seconds with soap and water, especially after going to the bathroom, before eating, after blowing your nose, coughing or sneezing.
 - If soap and water are not readily available, use hand sanitizer with a least 60% alcohol,
- Stay home when you are sick and avoid contact with persons in poor health
- Avoid touching your eyes, nose and mouth with unwashed hands
- Cover your cough or sneeze into a tissue, then disposing of the tissue
- Disinfect frequently touch objects and surfaces using a regular household cleaning spray or wipe.

Follow CDC guidance for current self-quarantine and isolation procedures.

- **What to Do if you are Sick:** <https://www.cdc.gov/coronavirus/2019-ncov/if-you-are-sick/index.html>

Primary Symptoms of COVID-19 include:

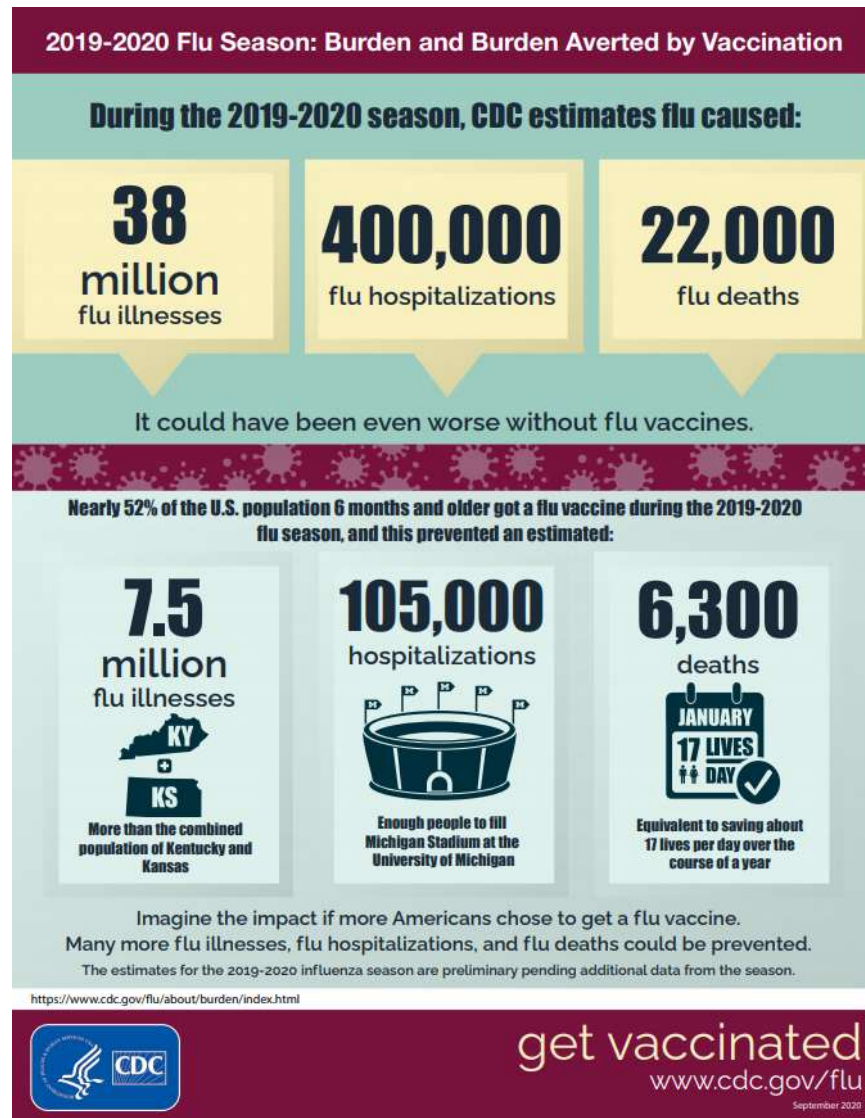
- Fever or chills
- Cough
- Shortness of breath or difficulty breathing
- Fatigue
- Muscle or body aches
- Headache
- New loss of taste or smell
- Sore throat
- Congestion or runny nose
- Nausea or vomiting
- Diarrhea



Symptoms may appear in a few as two days or as many as 14 days following exposure. The elderly and those with underlying medical conditions like high blood pressure, heart problems and diabetes are more likely to develop serious illness. There is currently no vaccine to prevent COVID-19. Current evidence indicates that COVID-19 causes milder symptoms in younger healthier people and children and they are less infectious to others than originally thought.

COVID-19: Influenza Prevention

With a new season upon us, we would like to remind residents to **GET YOUR FLU SHOT NOW!**



The Florida Department of Health urges Floridan's to:

- Contact your health care provider or pharmacy to get vaccinated against the flus as soon as possible, preferably before the end of October.
- Get caught up on your vaccinations if you're behind.
- See your primary care health care provider if your visits have been delayed.
 - Please attend your routine health care whether that may include having blood pressure checked, lipid levels measured or glucose levels and hemoglobin A1c measured if indicated.
 - If you are not up to date on screening for medical conditions which can include cancer, such as mammograms, colonoscopies and other surveillance, please do so.
- We also recognize the tremendous toll that COVID-19 may have had on our mental health and that of our community. Please reach out if you need assistance.

Reducing Illness and hospitalizations from the flu helps keep everyone safer.

Save lives by reducing the spread of viruses.

COVID-19: Vaccine

DOH has convened a statewide planning group to help develop a statewide strategy for the release of one or more vaccines in late 2020/early 2021. DOH-Okeechobee is reviewing mass vaccination plans and are awaiting further guidance from the state.

Florida's Draft COVID-19 Vaccination Plan:

http://www11.doh.state.fl.us/comm/partners/covid19_report_archive/vaccination-plan/vaccination_plan_latest.pdf

- ✓ **Plan for Range of Vaccine Supply Scenarios:** There are multiple vaccines in trials so the strategies being developed must address all possible situations including the need for two vaccinations, maintain ultra-cold chain, rapid administration, data entry and reporting. Four Working Vaccine Assumption Scenarios in 3 phases of vaccine supply availabilities.
- ✓ **Develop Effective Systems for Tracking**
- ✓ **Equitable Framework for Distribution of Vaccine:** Given the challenging storage, handling, and administration requirements, early vaccination should focus on administration sites that can reach critical populations with an equitable and transparent framework using pre-established, evidenced-based criteria to prioritize allocation.
 - Hospital, EMS and Pharmacy Surveys being conducted – data to be compiled shortly.
 - MOA needed in order for DOH-Okeechobee to distribute vaccine (i.e. to first responders to administer vaccine).

Early Vaccination Phase 1:

1. Healthcare Personnel
 - Administration sites (during Phase 1) will not be required to store vaccine products beyond the period of time as they can be stored in the ultra-cold thermal shipping container.
2. Long Term Care Facility Residents
 - Last week, CDC announced that they are partnering with CVS and Walgreens to offer on-site vaccination services for residents of nursing homes and assisted living facilities once vaccination is recommended for them.
 - LTCF staff can also be vaccinated as part of this program
 - Free of charge to facilities
 - DOH reaching out to local entities and pharmacies to communicate requirement of participation.
3. Essential Workers

Scenario 1: FDA has authorized vaccine for EUA in 2020

Vaccine A: End of Nov 2020 (10M-20M doses)
End of Dec 2020 (20M-30M doses)

2ML vial, multidose (5 doses/vial)

2-dose series (21 days between doses)

Minimum order ~1,000 doses

Maximum order ~5,000 doses

- Ultra-cold temp (-90 degree C to -60 degree C)
- Shipping container should be replenished with pelleted dry ice within 24 hours and with dry ice every 5 days to maintain required temperature
- Container may be recharged 3x

Vaccine B: End of Nov 2020 (~10M doses)
End of Dec 2020 (~15M doses)

Multidose (10 doses/vial)

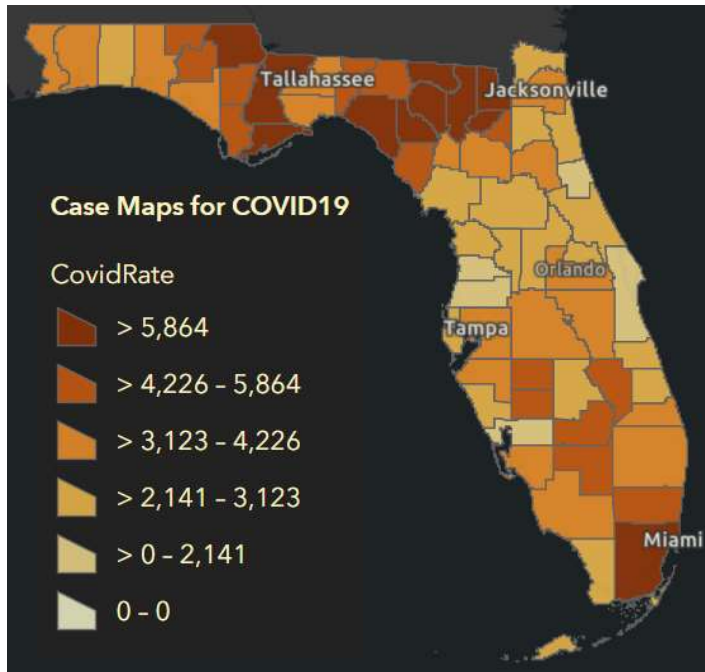
No on-site mixing required

Administer by intramuscular (IM) injection

2-dose series (28 days between doses)

- Frozen (-70 degree C +/- 10 degree C)
 - Must be used/recharged within 10 days
 - Storage in shipping container (replenish dry ice as needed)
- Refrigerated (2-8 degree C)
 - Must be used within 7-14 days
- Room Temperature – must be used within 6 hrs

Number of Florida resident COVID-19 cases per 100,000 population by county.



Okeechobee

Case data for Okeechobee

Cases per 100,000 people: 4,264

Total cases from Yesterday: 4

Total cases from the past 7 days: 52

Total cases from the past 14 days: 85

Total cases: 1,730

Total Population: 40,572

Highlands

Case data for Highlands

Cases per 100,000 people: 2,565

Total cases from Yesterday: 30

Total cases from the past 7 days: 154

Total cases from the past 14 days: 234

Total cases: 2,619

Total Population: 102,101

St. Lucie

Case data for St. Lucie

Cases per 100,000 people: 2,941

Total cases from Yesterday: 46

Total cases from the past 7 days: 327

Total cases from the past 14 days: 578

Total cases: 8,988

Total Population: 305,591

Glades

Case data for Glades

Cases per 100,000 people: 4,497

Total cases from Yesterday: 2

Total cases from the past 7 days: 9

Total cases from the past 14 days: 19

Total cases: 601

Total Population: 13,363

Martin

Case data for Martin

Cases per 100,000 people: 3,367

Total cases from Yesterday: 26

Total cases from the past 7 days: 140

Total cases from the past 14 days: 237

Total cases: 5,305

Total Population: 157,581