



Florida Department of Health Okeechobee County

COVID -19 Situation Report

Week of 10/19/20



The Florida Department of Health continues to monitor the state's response efforts to COVID-19 in Florida, the changing Federal guidance, best practices during the COVID-19 disaster emergency and continues to adjust our response efforts as state officials and medical experts continuously monitor data during reopening to best combat this virus.

You may find the most current information on Florida's COVID-19 Data and Surveillance Dashboard that contains LIVE COVID-19 case information: <https://experience.arcgis.com/experience/96dd742462124fa0b38ddedb9b25e429>

Current Global Situation

As of October 21, 2020

Global Cases	Global Deaths
41,033,709	1,127,797

Current USA Situation

As of October 21, 2020

USA Cases	Deaths
8,300,451	221,550

Current Situation in Florida

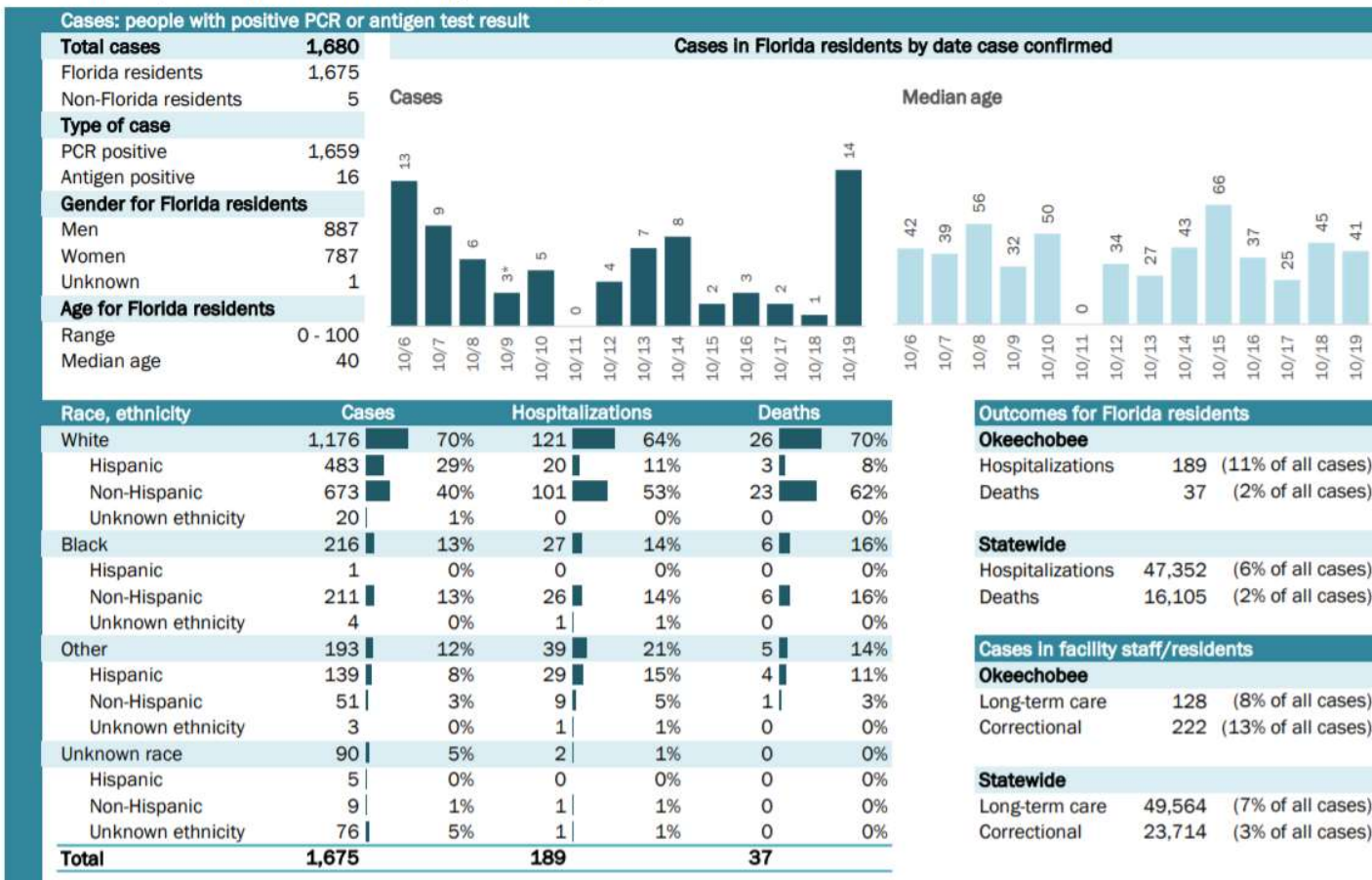
As of October 21, 2020

Total Cases	FL Resident Deaths
760,389	16,105

COVID-19: summary for Okeechobee County

Data through Oct 19, 2020 verified as of Oct 20, 2020 at 09:25 AM

Data in this report are provisional and subject to change.



28% of population



Current Testing Activity

CDC Who should get tested: <https://www.cdc.gov/coronavirus/2019-ncov/symptoms-testing/testing.html>

DOH State Testing Sites: https://floridahealthcovid19.gov/testing-sites/?display_map=1&county=Okeechobee&city=

COVID-19: summary for Okeechobee County

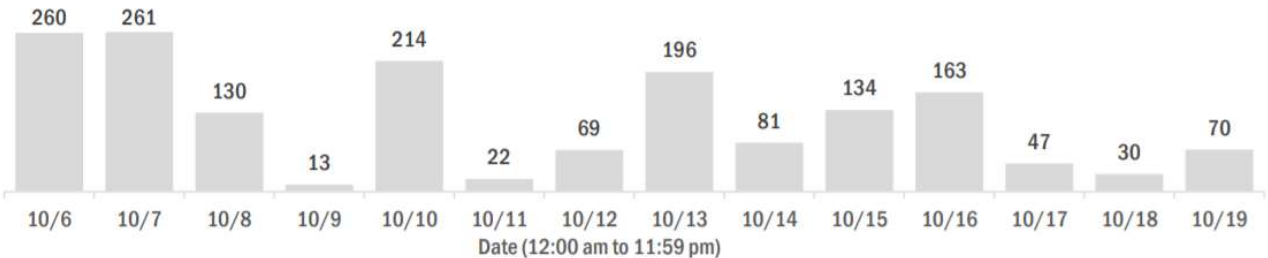
Data through Oct 19, 2020 verified as of Oct 20, 2020 at 09:25 AM

Data in this report are provisional and subject to change.

Laboratory testing for Florida residents over the past 2 weeks

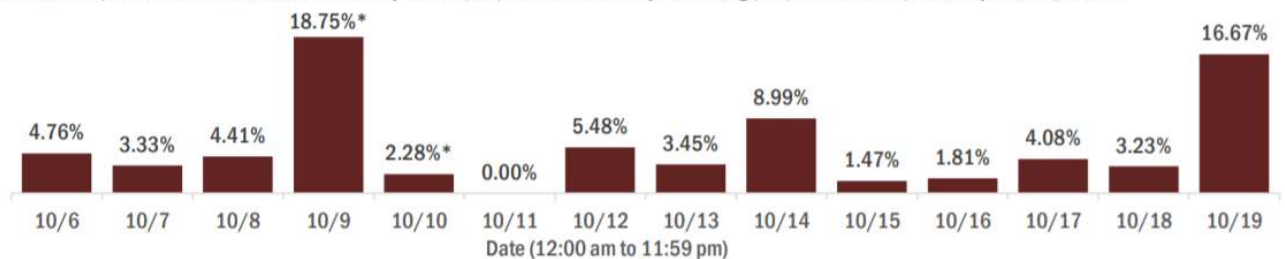
Number of Florida residents who tested negative per day

These counts include the number of people for whom the Department received negative PCR or antigen laboratory results by day. People who tested negative on multiple days will be included once for each day they are tested. Negative results for persons who have previously tested positive are excluded.



Percent positivity for new cases in Florida residents

These counts include the number of Florida residents for whom the department received PCR or antigen laboratory results by day. This percent is the number of people who test positive for the first time divided by all the people tested that day, excluding people who have previously tested positive.



* A data dump of previously reported lab results prevented the reporting system from normal processing of lab results on Oct 9, causing an inaccurate representation of data for Oct 9 and 10. The most accurate way to interpret percent positivity for these 2 days is as a 2-day average, which was 3.40%

The average positivity over the past 14 days is: 5.62%. ↓ 0.65% from previous 2-week period.

- The decrease in positivity rate was in part due to declined numbers in all identified facility outbreaks.

Cumulative Percent Positive

14.11%

Previous Day Percent Positive

16.67%

Antibody Results for Okeechobee County *Data as of October 1, 2020

County	Positive	Negative	Total Tested	Percent Positivity
Okeechobee	22	252	274	8.03%
State Total	50,676	475,588	526,404	9.63%

*state total includes inconclusive results



Florida Department of Health
Okeechobee County
1728 NW 9th Ave.
Okeechobee, FL 34972

FREE COVID-19 TESTING

Oral Swab

When & Where Is Testing?

Monday – Friday

8AM – 2PM *by Appointment Only*

Call: (863) 462-5800 *Press Option 3 Immediately*

How Long Until I Get My Results?

Approximately 48 Hours

Who Can Be Tested?

High priority vulnerable populations and must have symptoms:

- First Responders (EMS, Firefighters, Law Enforcement and Dispatchers) **can be asymptomatic*
- Healthcare Personnel
- School Employees & Students
- Long-Term Care Facilities
- Individuals Living or Working in Congregate Settings (Correctional, Homeless Shelter)
- Individuals Age 65+
- Individuals with Underlying Medical Conditions, including:
 - Cancer
 - Chronic Lung, Kidney, or Liver Disease
 - COPD (chronic obstructive pulmonary disease)
 - Diabetes
 - Serious Heart Conditions
 - Severe Obesity (BMI Greater Than 30)
 - Asthma
 - Sickle Cell Disease
- Pregnant Women
- Individuals Living in Households with a High-Risk Individual or Provide Care to High-Risk Individuals



Please Follow CDC Guidelines:

- Isolate from Others Until You Receive Test Results
- Do not go to School or Work if Symptomatic and Waiting for Results



School Reopening

Age Distribution of Okeechobee COVID-19 Cases:

Age group	All cases		New cases (10/19)		Hospitalizations		Deaths	
0-4 years	41	2%	0	0%	3	2%	0	0%
5-14 years	123	7%	0	0%	1	1%	0	0%
15-24 years	263	16%	1	7%	9	5%	0	0%
25-34 years	255	15%	5	36%	9	5%	1	3%
35-44 years	277	17%	2	14%	18	10%	1	3%
45-54 years	239	14%	2	14%	22	12%	1	3%
55-64 years	246	15%	2	14%	43	23%	9	24%
65-74 years	109	7%	2	14%	36	19%	3	8%
75-84 years	85	5%	0	0%	34	18%	12	32%
85+ years	37	2%	0	0%	14	7%	10	27%
Unknown	0	0%	0	0%	0	0%	0	0%
Total	1,675		14		189		37	

Hospitalization counts include anyone who was hospitalized at some point during their illness. It does not reflect the number of people currently hospitalized.
Other race includes any person with a race of American Indian/Alaskan native, Asian, native Hawaiian/Pacific Islander, or other.

All public-school parents and guardians are responsible for using the Daily Home Screening Tool to assess their children for COVID-like symptoms before the start of each school day. If after using the tool, parents are not sure their child is completely free of COVID-like symptoms, children should not attend school.

CDC Home Screening Tool: <https://www.cdc.gov/coronavirus/2019-ncov/downloads/community/schools-childcare/Daily-Home-Screening-for-Students-Checklist-ACTIVE-rev5A.pdf>

Department of Health Notification of Potential School Related COVID-19 Exposure:

The Florida Department of Health, in coordination with the School District of Okeechobee County, notify parents and individuals who may have been exposed to someone who may have been exposed to someone at school who has been confirmed with COVID-19.

Okeechobee County Schools	Total Positive COVID-19 Cases as of 10.22.20	Close Contact Exclusion – Students	Close Contact Exclusion-Staff
Okeechobee High School	7	71	15
South Elementary School	5	31	2
Seminole Elementary School	2	14	0
North Elementary School	2	5	0
Central Elementary School	3	56	1
Yearling Middle School	4	25	8
Everglades Elementary School	3	0	0
Okeechobee Achievement Academy	1	0	0
Osceola Middle School	2	56	1
Okeechobee Freshman Campus	5	0	0
Total All 10 Public Schools	34	258	27

*not all positive cases have let to close contact exclusions

The Okeechobee County School District process has done well with **no known secondary exposures** to date.

COVID-19: Characteristics of cases in pediatric residents < 18 years old

Data as of 10/20/2020

Table of testing in Florida residents <18 years old by county of residence

This table includes PCR and antigen test results received by the Department of Health from the state public health laboratory (BPHL), as well as commercial and hospital laboratories.

County	Cases	Tested negative	Total tested	Percent positivity	County	Cases	Tested negative	Total tested	Percent positivity
Alachua	673	7,806	8,479	7.9%	Lee	1,741	10,640	12,381	14.1%
Baker	100	673	773	12.9%	Leon	881	7,746	8,627	10.2%
Bay	400	2,779	3,179	12.6%	Levy	137	1,164	1,301	10.5%
Bradford	119	846	965	12.3%	Liberty	54	284	338	16.0%
Brevard	787	8,470	9,257	8.5%	Madison	156	811	967	16.1%
Broward	8,497	47,899	56,396	15.1%	Manatee	1,480	11,147	12,627	11.7%
Calhoun	52	462	514	10.1%	Marion	788	7,845	8,633	9.1%
Charlotte	164	1,812	1,976	8.3%	Martin	581	2,787	3,368	17.3%
Citrus	266	2,212	2,478	10.7%	Monroe	181	1,344	1,525	11.9%
Clay	480	5,173	5,653	8.5%	Nassau	189	1,962	2,151	8.8%
Collier	1,452	6,764	8,216	17.7%	Okaloosa	506	4,232	4,738	10.7%
Columbia	300	1,975	2,275	13.2%	Okeechobee	228	1,183	1,411	16.2%
Dade	13,569	66,374	79,943	17.0%	Orange	3,224	26,855	30,079	10.7%
Desoto	231	1,359	1,590	14.5%	Osceola	1,329	10,064	11,393	11.7%
Dixie	67	528	595	11.3%	Palm Beach	3,826	27,536	31,362	12.2%
Duval	2,849	26,923	29,772	9.6%	Pasco	836	9,227	10,063	8.3%
Escambia	922	8,162	9,084	10.1%	Pinellas	1,720	16,091	17,811	9.7%
Flagler	189	1,366	1,555	12.2%	Polk	2,334	15,968	18,302	12.8%
Franklin	71	600	671	10.6%	Putnam	388	3,203	3,591	10.8%
Gadsden	363	2,040	2,403	15.1%	Santa Rosa	587	4,822	5,409	10.9%
Gilchrist	55	592	647	8.5%	Sarasota	698	6,983	7,681	9.1%
Glades	46	136	182	25.3%	Seminole	776	6,848	7,624	10.2%
Gulf	97	594	691	14.0%	St. Johns	558	7,007	7,565	7.4%
Hamilton	109	537	646	16.9%	St. Lucie	734	5,237	5,971	12.3%
Hardee	255	1,046	1,301	19.6%	Sumter	129	940	1,069	12.1%
Hendry	285	1,418	1,703	16.7%	Suwannee	292	1,105	1,397	20.9%
Hernando	222	2,507	2,729	8.1%	Taylor	56	591	647	8.7%
Highlands	200	1,898	2,098	9.5%	Union	89	508	597	14.9%
Hillsborough	4,224	30,612	34,836	12.1%	Unknown	17	1,081	1,098	1.5%
Holmes	90	391	481	18.7%	Volusia	832	5,826	6,658	12.5%
Indian River	356	3,776	4,132	8.6%	Wakulla	130	1,001	1,131	11.5%
Jackson	212	1,199	1,411	15.0%	Walton	196	1,533	1,729	11.3%
Jefferson	45	382	427	10.5%	Washington	80	635	715	11.2%
Lafayette	26	155	181	14.4%	Total	64,230	451,020	515,250	12.5%
Lake	704	7,348	8,052	8.7%					

Multisystem Inflammatory syndrome in children (MIS-C) cases in Okeechobee residents <18 years old

County	Age	Gender	Race	Ethnicity	Diagnosis Date
Okeechobee	1	Male	Other	Hispanic	7/20/20

COVID -19: Your Health

The best way to prevent illness is to avoid being exposed to the virus. The Department recommends:

- Wear a mask or face covering in public to protect others
- Social Distance – Maintain 6 feet between you and others
- Avoid:
 - Crowds
 - Closed Spaces – poor ventilation
 - Close Contact (within 6 ft of someone with COVID for 15 mins or more) with people who are sick
- Wash hands often for at least 20 seconds with soap and water, especially after going to the bathroom, before eating, after blowing your nose, coughing or sneezing.
 - If soap and water are not readily available, use hand sanitizer with a least 60% alcohol,
- Stay home when you are sick and avoid contact with persons in poor health
- Avoid touching your eyes, nose and mouth with unwashed hands
- Cover your cough or sneeze into a tissue, then disposing of the tissue
- Disinfect frequently touch objects and surfaces using a regular household cleaning spray or wipe.

Follow CDC guidance for current self-quarantine and isolation procedures.

- **What to Do if you are Sick:** <https://www.cdc.gov/coronavirus/2019-ncov/if-you-are-sick/index.html>

Primary Symptoms of COVID-19 include:

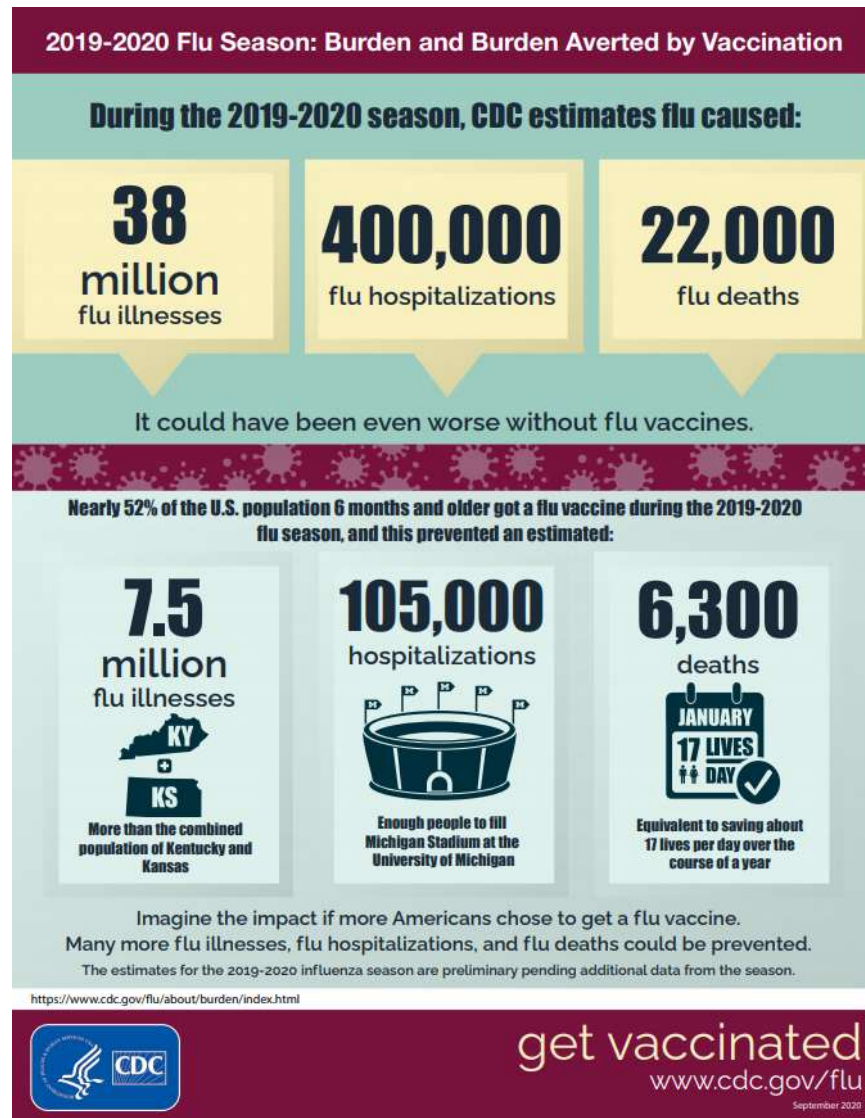
- Fever or chills
- Cough
- Shortness of breath or difficulty breathing
- Fatigue
- Muscle or body aches
- Headache
- New loss of taste or smell
- Sore throat
- Congestion or runny nose
- Nausea or vomiting
- Diarrhea



Symptoms may appear in a few as two days or as many as 14 days following exposure. The elderly and those with underlying medical conditions like high blood pressure, heart problems and diabetes are more likely to develop serious illness. There is currently no vaccine to prevent COVID-19. Current evidence indicates that COVID-19 causes milder symptoms in younger healthier people and children and they are less infectious to others than originally thought.

COVID-19: Influenza Prevention

With a new season upon us, we would like to remind residents to **GET YOUR FLU SHOT NOW!**



The Florida Department of Health urges Floridan's to:

- Contact your health care provider or pharmacy to get vaccinated against the flus as soon as possible, preferably before the end of October.
- Get caught up on your vaccinations if you're behind.
- See your primary care health care provider if your visits have been delayed.
 - Please attend your routine health care whether that may include having blood pressure checked, lipid levels measured or glucose levels and hemoglobin A1c measured if indicated.
 - If you are not up to date on screening for medical conditions which can include cancer, such as mammograms, colonoscopies and other surveillance, please do so.
- We also recognize the tremendous toll that COVID-19 may have had on our mental health and that of our community. Please reach out if you need assistance.

Reducing Illness and hospitalizations from the flu helps keep everyone safer.

Save lives by reducing the spread of viruses.

COVID-19: Vaccine

Florida Department of Health has recently convened a statewide planning group to help develop a statewide strategy for the release of one or more vaccines in late 2020/early 2021. There are multiple vaccines in trials so the strategies being developed must address all possible situations including the need for two vaccinations, maintain ultra-cold chain, rapid administration, data entry and reporting.

DOH-Okeechobee is reviewing our mass vaccination plans and are awaiting further guidance from the state.

COVID-19 Vaccination Program Interim Playbook for Jurisdiction Operations: https://www.cdc.gov/vaccines/imz-managers/downloads/COVID-19-Vaccination-Program-Interim_Playbook.pdf

Plan for Range of Vaccine Supply Scenarios: Four Working Vaccine Assumption Scenarios in 3 phases of vaccine supply availabilities.

Develop Effective Systems for Tracking

Equitable Framework for Distribution of Vaccine: Given the challenging storage, handling, and administration requirements, early vaccination should focus on administration sites that can reach critical populations with an equitable and transparent framework using pre-established, evidenced-based criteria to prioritize allocation.

Early Vaccination Phase 1:

- Healthcare Personnel
 - Administration sites (during Phase 1) will not be required to store vaccine products beyond the period of time as they can be stored in the ultra-cold thermal shipping container.
- Long Term Care Facility Residents
 - Last week, CDC announced that they are partnering with CVS and Walgreens to offer on-site vaccination services for residents of nursing homes and assisted living facilities once vaccination is recommended for them.
 - ✓ LTCF staff can also be vaccinated as part of this program
 - ✓ Free of charge to facilities
 - ✓ DOH reaching out to local entities and pharmacies to communicate requirement of participation.
- Essential Workers

Scenario 1: FDA has authorized vaccine for EUA in 2020

Vaccine A: End of Nov 2020 (10M-20M doses)
End of Dec 2020 (20M-30M doses)

2ML vial, multidose (5 doses/vial)

2-dose series (21 days between doses)

Minimum order ~1,000 doses

Maximum order ~5,000 doses

- Ultra-cold temp (-90 degree C to -60 degree C)
- Shipping container should be replenished with pelleted dry ice within 24 hours and with dry ice every 5 days to maintain required temperature
- Container may be recharged 3x

Vaccine B: End of Nov 2020 (~10M doses)
End of Dec 2020 (~15M doses)

Multidose (10 doses/vial)

No on-site mixing required

Administer by intramuscular (IM) injection

2-dose series (28 days between doses)

- Frozen (-70 degree C +/- 10 degree C)
 - Must be used/recharged within 10 days
 - Storage in shipping container (replenish dry ice as needed)
- Refrigerated (2-8 degree C)
 - Must be used within 7-14 days
- Room Temperature – must be used within 6 hrs